

# Welcome Aboard **RTS** Digital

by **Downer**

The new evolution in digital across rollingstock asset management.





## Enabling communities to thrive

Downer is the leading provider of integrated infrastructure services across Australia and New Zealand.

We are committed to building strong relationships with our customers, people, and communities.

Together, we enable communities to thrive, shaping a connected and sustainable future.

With 31,000 employees, our footprint covers every corner of Australia and New Zealand.

We operate across four sector-focused, trans-Tasman business units, leveraging our technical capability to ensure our customers' success.



## Australia's leading provider of rail and transit systems

Downer's Rail and Transit Systems is the leading rail business in Australia, with expertise in delivering whole-of-life asset management support to our customers.

We have over 150 years' rail experience delivering innovative transport solutions.

Today, we leverage our capabilities to offer rollingstock, infrastructure, rail systems, operation and maintenance, system integration, engineering innovations and digital and data solutions.



**15+ sites**  
depots & facilities  
operated

**880+ million**  
annual passenger  
journeys

**13.5+ million**  
people serviced

**150+ years**  
experience

**2,000+**  
cars maintained  
**3,000+**  
cars built

**3000+**  
cars overhauled

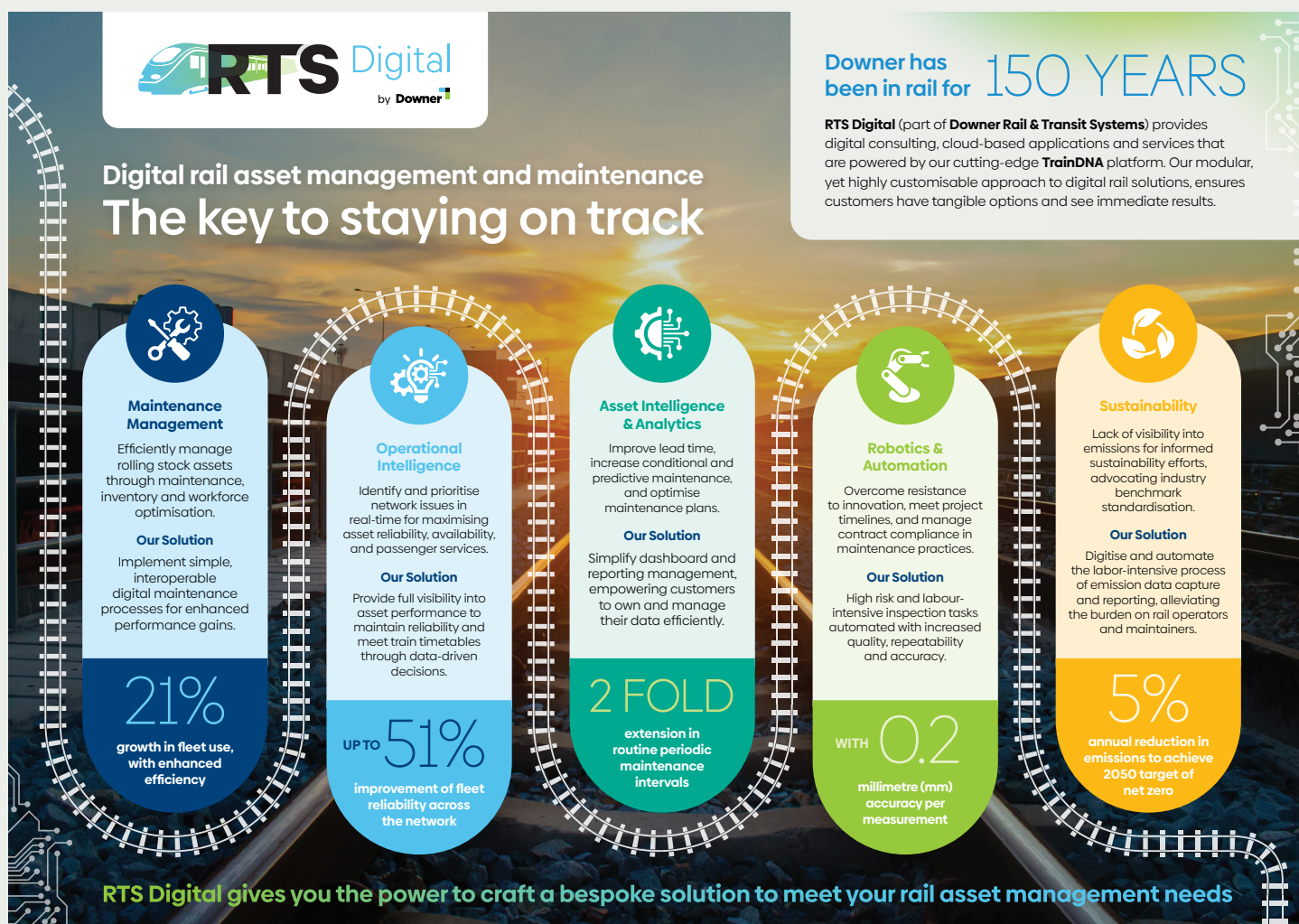
## Welcome Aboard RTS Digital

RTS Digital is Downer Rail and Transit Systems' digital consulting, software, and services business, leveraging over 15 years of experience in technology and innovation.

Powered by our TrainDNA platform, RTS Digital takes a product-based approach to servicing customers globally.

Our SaaS based offerings, package capabilities and tools into modules addressing specific customer needs in rail, across Digital Maintenance, Operational and Asset Intelligence, Robotics and Sustainability. [Refer to the image below.](#)

Enabling digital and data driven insights, customer outcomes and value is delivered in weeks instead of months.

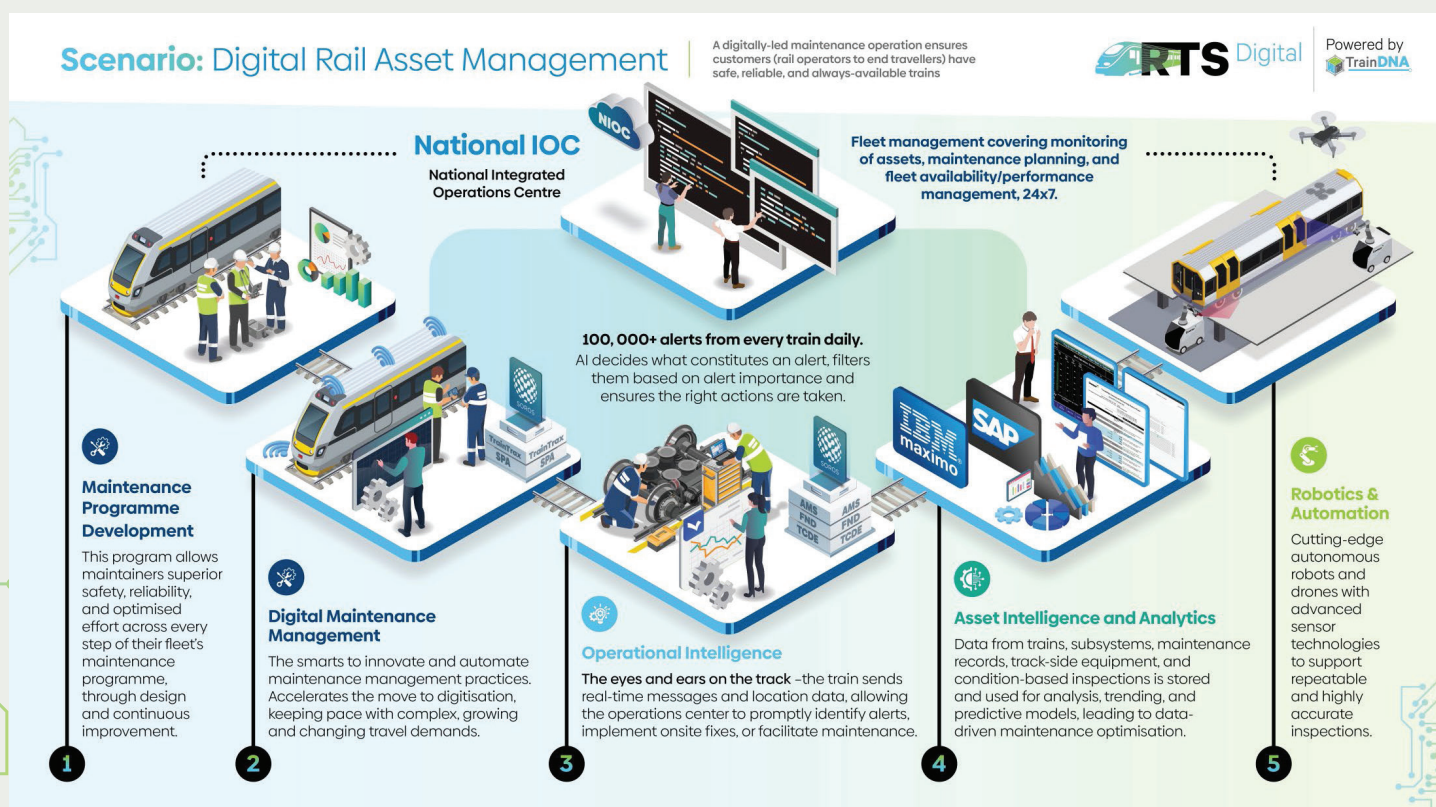


At RTS Digital, we focus on supporting rail-centric customers across varying maintenance and operational challenges – today and into the future.

## Our Digital Rail Eco-system

Across the varying facets of rail maintenance and operations, advancements in technology are seeing the need and value to integrate and manage data well. As trains get more digitally enabled, data output significantly increases.

At RTS Digital, we have taken over 15 years digital rail experience to create a platform, known as TrainDNA, that supports a world leading digital rail asset management ecosystem; allowing rail asset maintainers and operators to provide class leading reliability and performance and improved passengers outcomes.



## Our Strategic Partnerships

As Downer expands and takes RTS Digital's products and solutions into new markets, the importance of good partnerships is key. RTS Digital's strong partnerships are underpinned by innovative thought leadership, ensuring we match the right digital tool for the right job and customer.

In a digital-driven world, it is imperative to not just have a multitude of partners but to choose the right ones to drive value and provide a technical capability to support customer success. Through specialist and strategic partnerships, RTS Digital can utilise new technologies as they become available.



## Reference Library

If you are interested in any RTS Digital products or capabilities, please refer to the reference library below or click on the hyperlinks shown below.

Alternatively please feel free to reach out via email: [RTSDigital@Downergroup.com](mailto:RTSDigital@Downergroup.com) and the team will respond promptly.

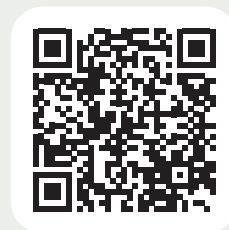
RTS Digital Landing page:



RTS Digital website:



Maintenance Management & Operational Intelligence Overview (video):



Robotics Overview (video):



What makes RTS Digital different (LinkedIn)





#### **Rail and Transit Systems**

39 Delhi Road

North Ryde New South Wales 2113

**Website:** <https://www.downergroup.com/traindna>

**Email:** [rtsdigital@Downergroup.com](mailto:rtsdigital@Downergroup.com)