

# Queensland Train Manufacturing Program

## Ormeau rail facility environmental management

Protecting and enhancing the environment is an important part of building and operating the Queensland Train Manufacturing Program (QTMP) Ormeau rail facility.

### Environmental approvals

Prior to construction commencing, investigations were undertaken to understand the environmental values of the site, including:

- wildlife and habitat surveys to identify any significant ecological communities
- flora surveys to determine the presence of protected plants
- cultural heritage surveys to identify and protect items of cultural significance to the local first nations peoples
- aquatic surveys and water quality monitoring.

This information is being used to progress the rail facility design and the controls that will be needed to build and operate the rail facility in an environmentally appropriate manner.

All applicable legislative environmental requirements will be met during construction and operation.

### Protecting trees and other flora

We understand the important role trees play in our environment and the value they have within the local community.

Trees and other vegetation on site will only be removed if necessary. For example, internal construction vehicle access tracks have been formed to avoid trees, including a culturally significant tree grove, near Goldmine Road.

Once construction is completed, areas within the site will be rehabilitated. This will involve planting and/or direct seeding of the native *Casuarina Glauca* (coastal she-oak) and these will be sourced locally, where possible. Rehabilitated areas will have an equal or greater density of vegetation when compared to the pre-construction state.

We are consulting with the Traditional Owners and the local community to identify opportunities to reuse felled timber. Uses may include education opportunities, creating habitats on and off site for small animals, and as decorative features at the final rail facility.

### Protecting wildlife

During vegetation clearing and construction there can be impacts to wildlife. To manage this, trees and other vegetation are only cleared if necessary. Prior to clearing, a qualified ecologist will assess the site and if any wildlife is found, it will be safely relocated.



## Water quality management

We are responsible for managing water quality during construction and operation of the rail facility.

There are two waterways within the rail facility site – Halfway Creek and Bridge Creek. Various measures will be in place to protect the intersecting waterways, including:

- undertaking regular water quality testing
- implementing sediment and soil erosion controls including establishing sediment basins, silt fences, clean-water diversion, and rock filter dams
- implementing soil stabilisation and rehabilitating disturbed areas to reduce water run-off.

## Flood management

With two natural waterways running through the site, flooding has been an historic occurrence. We have carried out detailed flood modelling prior to construction and will continue to do this as works progress.

## Pest and weed management

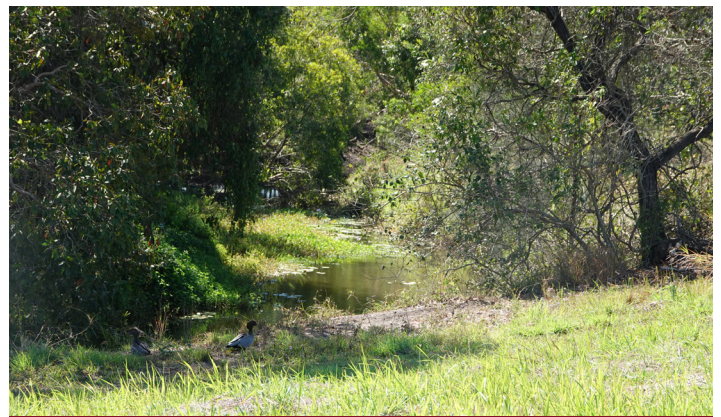
We are responsible for managing pests and weeds, which is important to protecting and restoring existing ecological values and improving biodiversity.

Site assessments are regularly undertaken to identify potential fire ant habitats and nests on site. Any signs of fire ant activity will be immediately managed in line with relevant legislation. We will also implement biosecurity strategies to manage potential infestations and reduce the introduction of other pest species.

## Sustainability

We are committed to designing and building the rail facility in a sustainable way. Sustainability will be embedded into the planning, construction and operation of the rail facility, as part of our commitment to achieving an Infrastructure Sustainability (IS) Excellent rating.

Sustainability touches all facets of the project, including protecting and enhancing environmental values. To support this, renewable energy, measures to minimise greenhouse emissions, and sustainable water management strategies will be used on site.



*Water monitoring: The two waterways on site, Bridge Creek and Halfway Creek, are regularly tested to ensure optimal water quality.*



*Fauna care: A blue tongue lizard being carefully relocated from the site.*

## Contact us

Find out more online at [www.tmr.qld.gov.au/trainmanufacturing](http://www.tmr.qld.gov.au/trainmanufacturing)

Email [qtmp@downergroup.com](mailto:qtmp@downergroup.com) | Call **1800 464 512\*** | Post PO Box 830, Brisbane QLD 4000

Contact us for alternate accessible formats or for Translation Services.

*\*Monday to Friday 6.30am to 7.30pm and Saturday from 7am to 1pm. Free call from anywhere in Australia, call charges may apply for mobile phones. Check with your service provider for call costs.*

## Stay up to date.

Subscribe to receive email updates and notifications.

