



## Enabling communities to thrive

Downer is the leading provider of integrated infrastructure services across Australia and New Zealand.

We are committed to building strong relationships with our customers, people and communities.

Together, we enable communities to thrive, shaping a connected and sustainable future.

With 31,000 employees, our footprint covers every corner of Australia and New Zealand.

**31,000**  
employees



**250+**  
locations



**\$12.6 billion**  
revenue in  
FY2023



A network of  
**25,000**  
suppliers and  
subcontractor partners



## What we do

We operate across four sector-focused, trans-Tasman business units, leveraging our technical capability to ensure our customers' success.



### Rail & Transit Systems

Rollingstock asset management services



Revenue\* **\$1.3 billion**



People - **1,850**



### Transport & Infrastructure

Integrated transport network and infrastructure delivery services



Revenue\* **\$4.5 billion**



People - **6,695**



### Energy & Utilities

Services and solutions that connect communities to essential networks and infrastructure.



Revenue\* **\$3.2 billion**



People - **9,950**



### Social Infrastructure & Citizen Services

Management and operations of buildings and facilities



Revenue\* **\$2.4 billion**



People - **12,850**

\* FY23 revenue

# Australia's leading provider of rail and transit systems, now global

Downer's Rail & Transit Systems is the leading rail business in Australia, with expertise in delivering whole-of-life asset management support to our customers.

We have over 150 years' rail experience delivering innovative transport solutions.

Today, we leverage our capabilities to offer rolling stock, infrastructure, rail systems, operation and maintenance, system integration, engineering innovations and digital and data solutions.

We design, build and maintain trains across Australia with some of our flagship projects including:

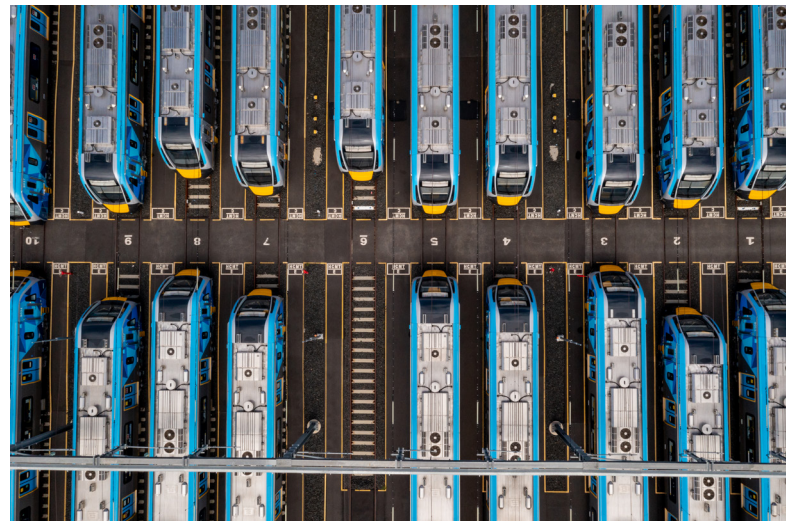
- Design, manufacture and maintain 65 new six-car trains as part of Queensland Train Manufacturing Program, supporting Cross River Rail and the 2032 Brisbane Olympic and Paralympic Games.
- Design, manufacture and maintain 119 Waratah trains in NSW – Australia's largest passenger fleet servicing Australia's largest passenger network.
- Design, manufacture and maintain 70 High Capacity Metro Trains in Victoria – a step change in public transport offering 20 per cent more capacity than other fleets and designed with customer-centered stakeholder engagement.
- Refurbish 85% of the Yarra Trams fleet, making it the world's largest tram refurbishment project.
- Manufacture over 1,000 rail cars and nearly 1,000 locomotives from our Maryborough, Queensland site.
- Construction of the Newcastle Light Rail Project, maintenance of the fleet, and through Keolis Downer the operations of the fleet.

## How we support the global rail industry

Downer is in a unique position as Australia's leading rail and transit systems provider to be able to support the global industry.

We have a long history of designing and manufacturing rolling stock, and are the largest provider of through-life support asset management services for passenger rolling stock in Australia.

With a network of global partners, suppliers and customers, we are committed offering dedicated rail and transit systems services to support across the globe.



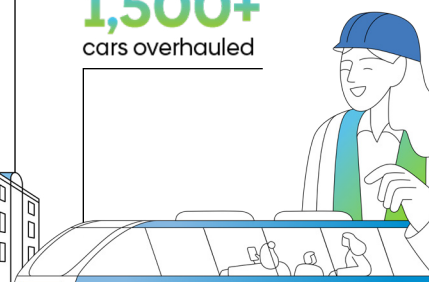
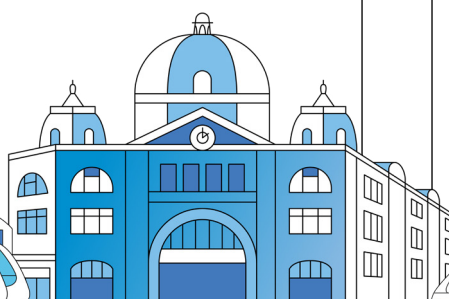
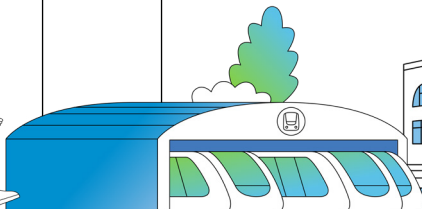
**1,900+**  
cars maintained

**15+ sites**  
depots & facilities  
operated

**3,600km**  
network length

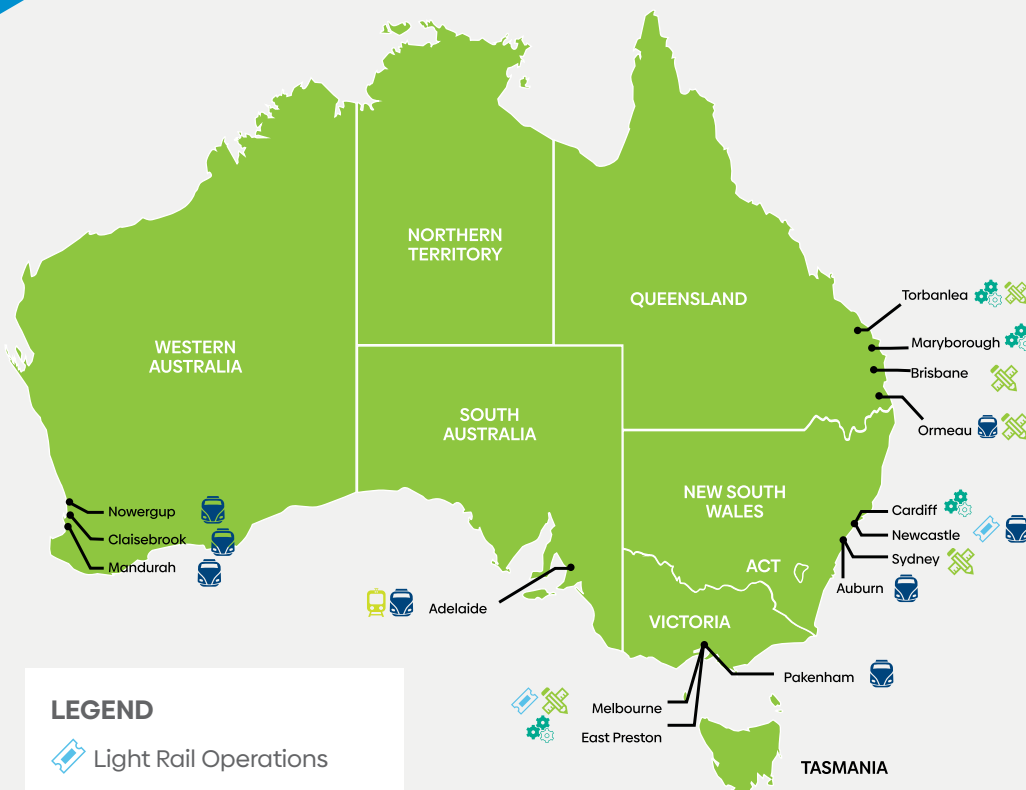
**3,000+**  
cars built

**1,500+**  
cars overhauled





## Our established capability



### LEGEND

- Light Rail Operations
- Service Delivery Centre
- Fleet Maintenance Centre
- Project Office
- Heavy Rail Operations



### ROLLING STOCK

Design, build, maintain and overhaul



### OPERATIONS

Rail and bus



### DIGITAL AND DATA SOLUTIONS



### CONSULTING

Engineering and design



### ASSET MANAGEMENT

Freight and passenger



### HEAVY AND LIGHT RAIL

Decarbonisation



## Our partners

As Australia's leading provider of rail and transit systems, we work globally with our network of partners to bring innovative solutions to customers and passengers.

ABB

CRRC

DELLNER

dk danburykline

EKE

FMT

HYUNDAI  
Rotem

IBM

KEOLIS

Keolis  
Downer

KNORR-BREMSE

Wabtec  
CORPORATION

ZTR

# Join Downer Down Under!

Are you ready for a sea change in your rollingstock career?

Join Downer in Australia, where you can work from iconic locations like Sydney, Melbourne, Brisbane, and the stunning Hervey Bay.

With a secure pipeline of work and global plans ahead, we are looking to strengthen our local team with key international talent. If you have a solid background in rollingstock design, manufacturing or maintenance and are looking for strategic roles in Engineering, Project Management or Operations Management, please get in touch.

We make relocation seamless with comprehensive visa and relocation assistance.

Work on ground-breaking projects and support the future of transport in Australia and beyond.



Learn more and register your interest at  
[www.downergroup.com/innotrans2024-join-us](http://www.downergroup.com/innotrans2024-join-us)

## Passenger Rail

We are a leading provider of rolling stock asset management services for passenger rail in Australia, with expertise in delivering whole-of-life asset management support to our customers.

Our capability allows us to offer turnkey solutions for complex projects and spans every project phase, from design and manufacture to through-life-support, condition monitoring and data analytics, fleet maintenance, operations and comprehensive overhaul of assets.

With Keolis Downer, we are Australia's largest private provider of multi-modal transport solutions, Australia's largest light rail operator, and a significant operator of buses, delivering 350 million passenger journeys per year.

Our position is uncompromised as the only player in the market with capabilities in rolling stock, infrastructure, rail systems, operation and maintenance, and system integration.

We set industry best practice with forward-looking technology solutions to deliver safe, comfortable and reliable services.

### Downer's recent flagship projects



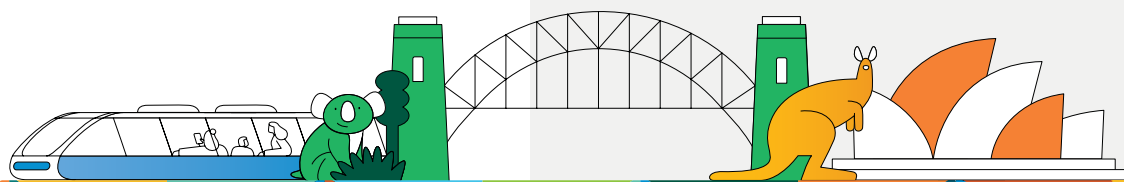
Design, build and maintain **70 seven-car High Capacity Metro Trains** in Melbourne



Design, build and maintain **119 eight-car Waratah Trains** — Australia's largest fleet



Design, build and maintain **65 six-car Queensland Train Manufacturing Program trains**







Downer offers sustainable freight rail solutions, including design, manufacture, and maintenance with a focus on decarbonisation and digital.

## Our proud history in freight

Downer has a long history of designing and manufacturing locomotives across Australia for every major operator and in every state. The first steam trains entered service from 1897, before we went on to build more than 500 steam locomotives between 1896 and 1958. We have subsequently continued to build locomotives at Maryborough through to the most recent diesel-electric GT42 narrow gauge locomotive. In total, we have manufactured almost 1,000 locomotives including diesel electric, diesel hydraulic, electric and steam locomotives from Maryborough alone.

## Our exciting future

Downer is a trusted partner who offers customers the full spectrum of design, manufacture and maintenance, as well as decarbonisation and digital and data solutions.

As we look to a net zero future, Downer is proud to bring a sustainability focus to provide engineering support, decarbonisation solutions and advanced rail technologies including our TrainDNA platform and an exclusive partnership with ZTR.

Downer's rail freight market offering can be tailored to specific customer requirements such as:

- Engineering fleet support with specialised freight engineering capability
- Advanced Asset Management services as Downer is accredited to ISO55001
- Quality wheel and bearing services
- Rolling stock maintenance
- Rolling stock design and manufacture
- Rolling stock overhaul and repair
- Decarbonisation solutions
- Advanced rail technologies, including data acquisition and asset protection equipment
- ZTR product range.

### More information

Download our Freight & Motive Systems brochure.



Watch as Pepe our apprentice boilermaker talks about how she's proud to enable communities to thrive through our freight offerings.



### To discuss how we can support you

Contact Troy Sparkman  
Troy.Sparkman@downergroup.com  
to arrange a meeting today.





## Engineering Consulting Services

Our Engineering Consulting Services business aims to revolutionise the transportation industry by providing seamless, efficient, and sustainable solutions tailored to meet the needs of both our customer, as well as yours.

Our integrated approach sets us apart, offering clients a one-stop solution for all their transportation needs.

By combining engineering excellence, operational expertise, data-driven insights, and project management proficiency, we deliver holistic solutions. With experience across design, manufacturing and through life support our team of engineers will benefit your next transportation project.

### More information

Download our Engineering Consulting Services brochure.



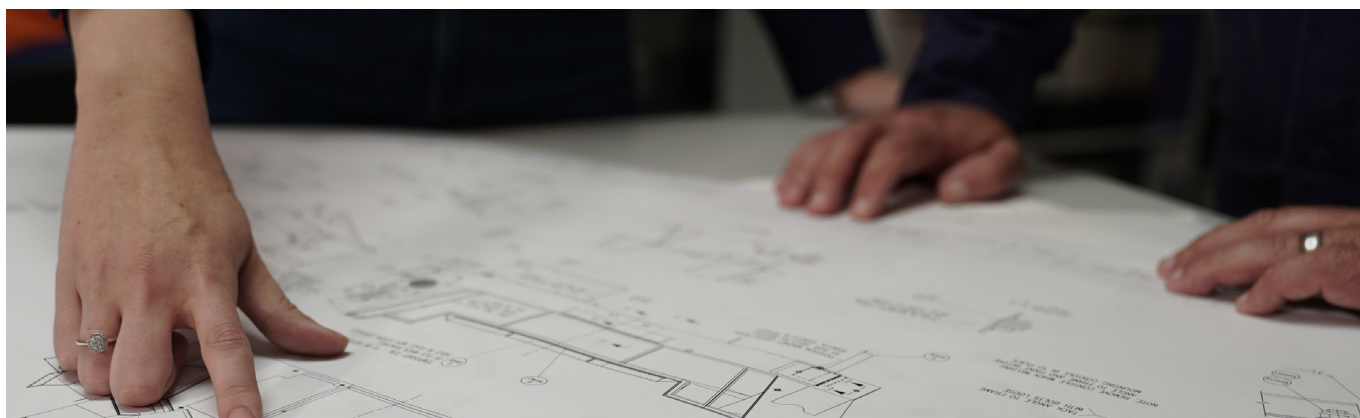
### To discuss how we can support you

Contact Todd Garvey  
[Todd.Garvey@downergroup.com](mailto:Todd.Garvey@downergroup.com)  
to arrange a meeting today.

200+ Engineers  
and Designers

100+ Projects

400,000+ Hours  
delivered in 2023





## Sustainable transport solutions

We are investing in technologies and practices to drive efficiencies and help our customers create a more sustainable transportation network. We know that almost all western jurisdictions have committed to being some form of net zero by 2050, which incentivises us to invest in technology and provision of new services focused on driving efficiency and long-term value. It is not just something we want to focus on, sustainability is critical to our success.

### Technology partners

As a leading rolling stock integrator, Downer has a strong network of technology partners which we have flexibility to work with to get the best outcome for a particular project's requirements.

We have technical relationships with industry leaders for traction systems, control systems and energy storage suppliers. In place are strategic partnership agreements with ABB for traction equipment and traction control, EKE for train control systems and we have an exclusive relationship with ZTR for the Australia and New Zealand region.

### Downer's hybrid technology: diesel, electric and battery providing a more sustainable rail network

Hybrid technology combining traditional fuels and electric battery power is already mainstream in the automotive industry. Downer has signed a strategic partnership agreement with ABB, who are a world leading in traction technology, on-board Energy Storage System (ESS), and electrical energy management.

Together we have developed hybrid technology which combines three modes of energy that provides operational flexibility to get the freight task done now, and into the zero-carbon emissions future.



### To discuss how we can support you

Contact Chris Bowen  
[Christopher.Bowen@downergroup.com](mailto:Christopher.Bowen@downergroup.com)  
to arrange a meeting today.



# Digital and Data Solutions

We deliver a full-service approach for improved passenger experiences through next generation asset management.

To support our customers, we offer multiple areas of digital and data expertise.



RTS Digital, our digital consulting, software and services business leveraging over 15 years of experience in technology innovation. Powered by Downer's TrainDNA platform, RTS Digital takes a product-based approach. No matter the size of the customer or digital maturity, our modular approach provides the flexibility to allow customers to advance their rail journey into digital practices based on their needs and capability. Our offering packages capabilities and tools into modules addressing specific customer needs across Digital Maintenance, Operational and Asset Intelligence, Robotics and Sustainability.

At RTS Digital, we focus on supporting rail centric customers across varying maintenance and operational challenges – today and into the future.

Some examples of the unique product features are:

- **Digital Maintenance Management:** Improving maintenance success by considering planned work orders, corrective work orders, inventory, depot resources, rostering and competencies when scheduling maintenance.
- **Operational Intelligence:** Providing the operator with situational awareness of what is happening on the network and predicting problems that will impact the passenger experience before they occur.
- **Asset Intelligence:** Capturing the data and managing the engineering and safety cases to extend overhaul periodicity on items such as wheels and bogies.
- **Robotics:** Automating exam inspections end to end, via autonomous mobile robots. The robots work in any depot without the need to modify it. New inspection tasks or entire exams for new fleets can be added within weeks by programming the robots.

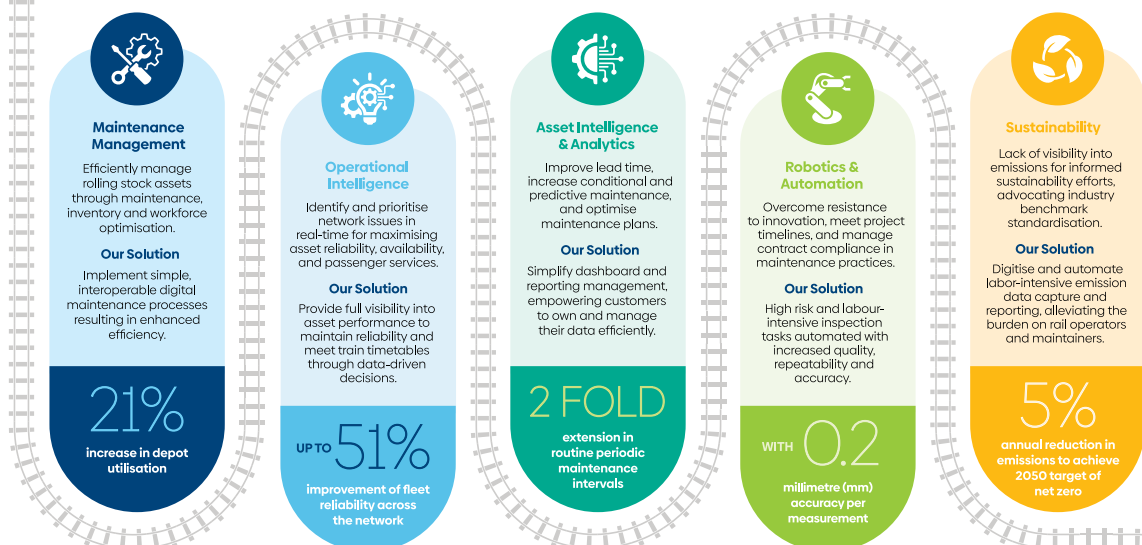
Visit our website

**To discuss how we can support you**

Contact Brendon Brownie  
Brendon.Brownie@downergroup.com  
to arrange a meeting today.



## Digital rail asset management and maintenance - The key to staying on track



Bespoke digital solutions to meet rail asset management needs.



xDNA, established in 2016 and trading under its current name since 2023, is the digital arm of Downer. We specialise in advanced technology solutions for critical infrastructure industries, including utilities, energy, rail, defence, mining, and transport. Our mission is to integrate human expertise with cutting-edge technology to enhance operational efficiency, safety, and sustainability.

Leveraging innovations in artificial intelligence, augmented reality and virtual reality, xDNA transforms how our clients manage and optimise their operations. Our solutions enable predictive maintenance, real-time decision-making, and immersive training experiences, driving significant improvements in efficiency and safety.

Our expert team uses complex data analytics and real-time processing to deliver actionable insights and comprehensive solutions through our Neuroverse Intelligence Platform. This platform ensures effective data utilisation to drive business value and innovation.

Based in major Australian cities and with data solutions hosted in the secure Microsoft Azure Australian region, xDNA ensures data sovereignty and local expertise. We are committed to providing reliable, high-quality service and driving digital transformation in critical industries. xDNA is your trusted partner for achieving strategic objectives and navigating the modern industrial landscape.

Visit our website



**To discuss how we can support you**

Contact Dean Coughran  
[dean.coughran@xdna.com.au](mailto:dean.coughran@xdna.com.au)  
to arrange a meeting today.

## National Integrated Operations Centre

Our National Integrated Operations Centre which is armed with Downer's industry-leading ICT capability and expert knowledge in rail network operations. Our team facilitates maintenance planning, engineering support and data analytics to provide benefits for our customers.

## Technical Subject Matter Experts

Our expert pool of technical SMEs delivering effective identification of failure modes and expedited containment of solution actions for our customers across digital and data for the rail industry.







## Say G'day to the Downer team at InnoTrans

The Rail & Transit Systems' team are available across InnoTrans 2024 in Hall 10.1 at Stand 300 to discuss our rolling stock pedigree and how we can support your business.

The team will also be presenting at Speaker's Corner on 10am Wednesday 25 September discussing *Innovating Rolling Stock Asset Management*.

If you miss us, you can connect with us through the below channels.



**Downer LinkedIn**



**[www.downergroup.com/innotrans2024](https://www.downergroup.com/innotrans2024)**

