

ABN: 66 008 709 608

Emergency Management Plan

Rosehill Asphalt & Repurposing Facility

Unwin Street Rosehill NSW 2142

DOCUMENT PREPARATION	DOCUMENT REVIEW	DOCUMENT AUTHORISATION
Barry Wood Zero Harm Advisor	Paul Sherry Production Manager Pat Capaan Business Manager - Reconomy	Darren Prosser Sydney / Newcastle Surfacing Manager

REVISION STATUS

Issue/ Revision/ Date	Summary of Section Changes	Reviewed By:	Authorised By:
	Updated Form	Barry Wood	Darren Prosser
28/03/18	Inclusion of Repurposing Facility	Barry Wood	Pat Capaan
12/12/18	Inclusion Nuk Gauges	Barry Wood	Darren Prosser

DISTRIBUTION AND AMENDMENT

This document is authorised, distributed and amended in accordance with the Downer Australia Management Procedure *DA-QA-PR001 Document Management*. Records of controlled copy distribution of this document are maintained by the Project Manager or his delegate.

Registered controlled copy recipients will automatically receive updates as and when amendments are made. Amended pages will be issued together with a transmittal form, and recipients are to ensure superseded versions are replaced and destroyed to prevent inadvertent use.

A hard copy of this document shall be maintained within the site office for the duration of the project and may be accessed by Employees, Contractors, Zero Harm Representatives and project personnel.

On project completion the EMP and associated documents are to be stored with the Project Files.

COPY NO:	1
ISSUED TO:	Reception

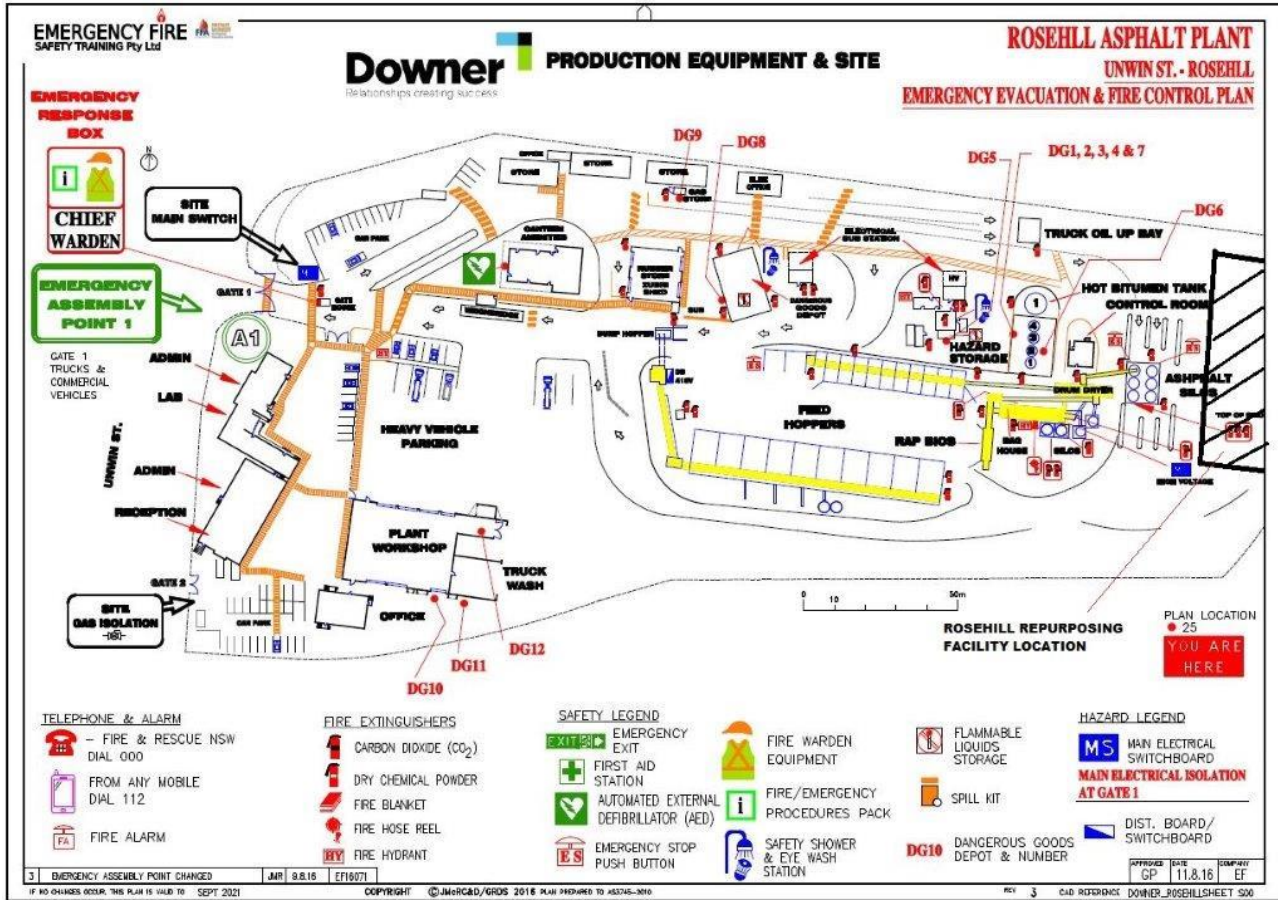
This Document shall at all times remain the property of Downer Australia and shall not be copied or disclosed in any part to any third party without written consent of the Divisional General Manager.

TABLE OF CONTENTS

1	PURPOSE AND SCOPE OF THE EMERGENCY MANAGEMENT PLAN	5
2	SITE EMERGENCY PROFILE	5
2.1	Site Location.....	5
2.2	Site Layout	5
2.3	Number of People on Site and at Time of Occupancy	6
2.4	Details of Neighbouring Facilities	6
3	COMMUNICATION OF THIS PLAN	7
3.1	Site Management	7
3.2	Site Supervisors	7
3.3	Employees, Contractors and Visitors	8
3.4	Emergency Response Team.....	8
3.5	Chief Warden	8
3.6	Deputy / Area Warden	9
3.7	First Aid Personnel	9
4	EMERGENCY RESPONSE EQUIPMENT	10
4.1	Fire Fighting Equipment.....	10
4.2	First Aid Facilities	10
4.3	Emergency Showers and Eyewash Stations	10
4.4	Spill Response Kits.....	10
5	EMERGENCY PREPAREDNESS & RESPONSE	10
5.1	Emergency Preparedness	10
5.1.1	Identify Emergencies.....	10
5.1.2	Develop Emergency Response Plans	11
5.1.3	Training	11
5.1.4	Testing and Recording for Emergencies.....	11
5.2	Emergency Response	11
5.2.1	Emergency Identification and Assessment	11
5.2.2	Raising the Alarm.....	12
5.2.3	Emergency Communication	13
6.2.4.1	Evacuation and Emergency Response Diagram	14
6.2.4.1A	Dangerous Goods / Haz Subs Diagram	14
6	RECOVERY.....	15
6.1	Post Emergency Activities	15
6.2	Emergency Management Plan Review.....	16
7	MONITOR AND REVIEW	16
	ANNEX 1 – SAMPLE EMERGENCY RESPONSE PLAN FLOWCHART.....	ERROR! BOOKMARK NOT DEFINED.
	ANNEX 2 – EMERGENCY CONTACT INFORMATION.....	17
	ANNEX 3 – EMERGENCY RESPONSE GUIDANCE	19
	Emergency Evacuation Guide (Standard).....	19

Fire Response	20
Medical Emergency.....	22
Personal Threat	22
Motor Vehicle / Road Transport Accident.....	22
Bomb / Substance Threat.....	23
Product Spills.....	25
Gas Leakage	27
Floods.....	24
Protesters on Site.....	24
EMERGENCY RESPONSE TEAM ACKNOWLEDGEMENT	25

2.2 Site Layout



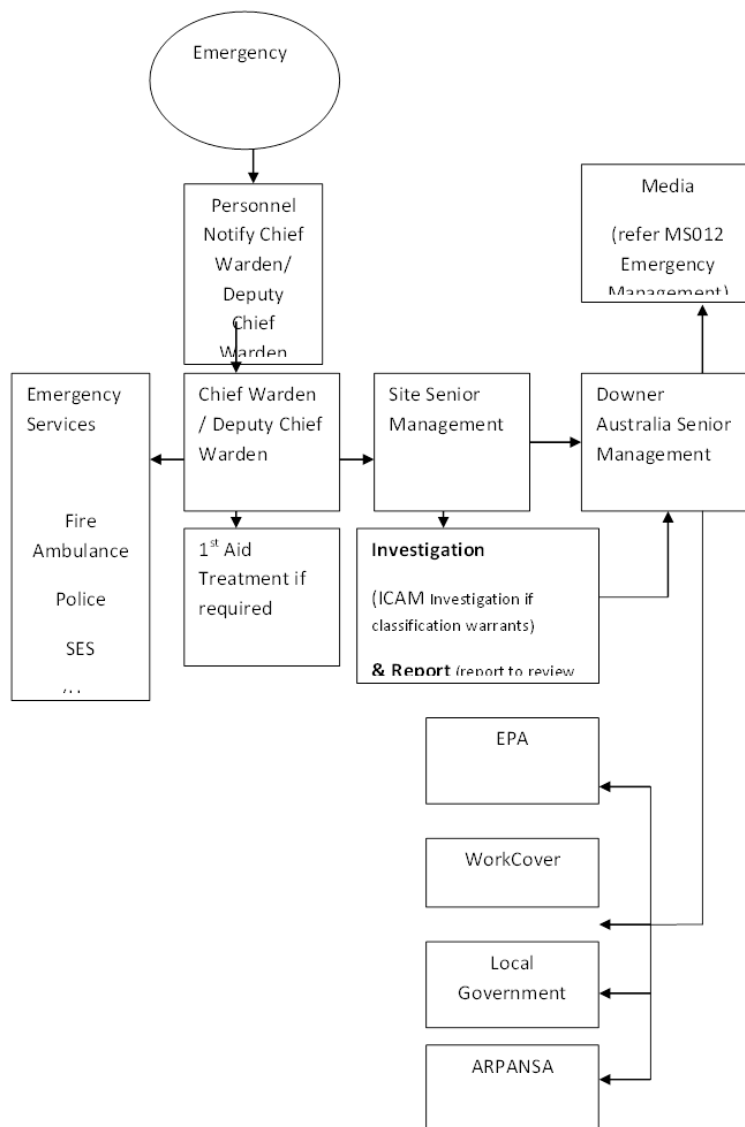
2.3 Number of People on Site and at Time of Occupancy

- Usual office operating hours are generally between 6am – 5pm, Monday to Friday. The site does operate a night shift general hours 7pm – 3am (but subject to change with extended hours and weekends due to production requirements)
- Area Manager: 7am-5pm
- Supervisor: 6am-5pm
- Production Assistant: 7am-4pm
- Plant Operator (1): 6am-3pm
- Plant Operator (2): 7pm-3am

2.4 Details of Neighbouring Facilities

Neighbouring Facilities	Contact Person & Phone number	Mechanism for raising the alarm and ongoing communication	Circumstance for raising the alarm
Chep Pallets	9897 2088	By phone	Fire/ Explosion
IMCD Sales & Distribution	9897 6100	By phone	Fire/ Explosion

5.2.3 Emergency Communication



If an Emergency situation arises...

- Alarm is raised by either the First Responder or Emergency Response Personnel (eg activate emergency alarm, radio or contact the emergency channel/line).
- Personnel are to prepare for Evacuation (shutdown plant and equipment if safe to do so) and await further instruction.
- Chief Warden determines appropriate action in line with nature of emergency & initiates evacuation procedure.
- Deputy Chief Warden or Area Warden responds to emergency.
 - Area Warden commences immediate evacuation and directs personnel to nearest exit point.
- Area Warden checks all areas clear of personnel.
- Area Warden directs and follows all personnel to assembly muster area.
- Area Warden advises Chief Warden all areas are clear.

ANNEX 1 – EMERGENCY CONTACT INFORMATION

Downer Australia Internal Emergency Contacts			
24-Hour Emergency Number 1300 366 538			
Administration (contact number and hours): 02 9897 4333 between 7am and 5pm			
Downer Rosehill contacts	Contact No.	After Hours No.	Details
Sydney / Newcastle Surfacing Manager - Darren Prosser	0419 302 046	0419 302 046	
Production Manager – Paul Sherry	0419 789 505	0419 789 505	
Recycling / Maintenance Manager – Roy Stiff	0407 228 098	0407 228 098	
Workshop Manager – Justin Ruggier	0408 467 710	0408 467 710	
Operations Manager – Crews Sean Flynn	0408 289 360	0408 289 360	
Pat Capaan - Reconomy	0457 980 710	0457 980 710	
Chief Fire Warden – Elizabeth Kennedy	02 98974351		All Incidences and Emergencies
Emergency Response Team (ERT)	02 98974351		All Incidences and Emergencies
First Aid Officer – Malcolm MacKenzie	02 98974321		First Aid
Downer Australia External Emergency Contacts			
Ambulance, Fire, Police	000 Mobile: 112		Life Threatening Emergencies
Fire Brigade - Silverwater 122 Adderley Street Silverwater	02 9647 1246	02 9647 1246	Fire and Chemical spills
Police - Granville 2 Carlton Street Granville	02 9897 4199	02 9897 4199	Security matters
Medical			
Public Hospital - Westmead Hawkesbury Rd & Darcy Road, Westmead	02 9845 5555	02 9845 5555	Serious Injury
Medical Centre – Merrylands Family Practice 189 Merrylands Road Merrylands	1300 637 000	1300 637 000	Injury
Poisons Information Centre	13 11 26	13 11 26	Poisons Information

Other Authorities as required by legislation			
Reportable following instruction with Regional Zero Harm Manager or delegate			
State Emergency Services	13 25 00	13 25 00	Notifiable incidents immediately
Local Council - Parramatta	1300 617 058	1300 617 058	Notifiable incidents immediately
Department of Public Health	02 9845 5555	02 9845 5555	Notifiable incidents immediately
Workplace Safety Regulatory Body (eg WorkSafe)	13 10 50	13 10 50	Notifiable incidents immediately
Environment Protection Authority	131 555	131 555	Notifiable incidents immediately
Supply Authorities:			Supply Issues
Electricity - Endeavour	131 003	131 003	Electricity
Gas - Jemena	131 009	131 009	Gas
Water – Sydney Water	13 20 92	13 20 92	Water

ANNEX 3 – EMERGENCY RESPONSE GUIDANCE

Emergency Evacuation Guide (Standard)

All attempts to respond to an emergency situation should at all times ensure personal safety and only be attempted if within the capabilities of the individual.

If an Emergency situation arises...

- Alarm is raised by either the First responder or Emergency Response Personnel (eg activate emergency alarm, radio or contact the emergency channel/line).
- Personnel are to prepare for Evacuation (shutdown plant and equipment if safe to do so) and await further instruction.
- Chief Warden determines appropriate action in line with nature of emergency & initiates evacuation procedure.
- Deputy Chief Warden or Area Warden responds to emergency.
- Area Warden commences immediate evacuation and directs personnel to nearest exit point.
- Warden to take Visitors book & Site Register of workers and contractors on site to Emergency Assembly / Muster Point
- Area Warden checks all areas clear of personnel.
- Area Warden directs and follows all personnel to Emergency Assembly / Muster point.
- Area Warden advises Chief Warden all areas are clear.
- Chief Warden and Area Warden hold personnel in muster area until directed by the Site Supervisor or Emergency Services Personnel.

Note: Emergency Evacuation Drills shall be evaluated and recorded using [DA-ZH-FM015.5 Emergency Drill Observer's Checklist](#)

Product Spills

In the event where of a Product Spill or Environmental incident:

1. Incident Identified

It is the responsibility of each Downer or Subcontract employee to be vigilant in the recognition of potential environmental conditions that may lead to environmental incidents. On identification;

2. Can the Incident be contained locally?

In determining whether the incident can be contained locally, employees involved must consider the risks to personal health and safety, protection of plant and property and protection of the environment including blocking drains, covering pits etc. If there is any doubt as to local containment, the appropriate Emergency Services must be called.

3. Call Emergency Services

In the event of an incident that is beyond local containment capability, notify the emergency services.

If required by legislation, Downer (through Regional Zero Harm Manager) will notify the relevant government authorities of the incident, including how the incident occurred, measures that have been undertaken to rectify the situation and any impacts that the incident has had on the environment.

4. Employ Containment Procedures

Once an incident has been identified, all efforts must be undertaken to contain and minimise the effect of the incident on the environment. This can be achieved by isolating the cause and erecting suitable barriers to prevent the spread or flow of the particular incident.

5. Notify the Responsible Manager

Every environmental incident must be reported to the Responsible Manager as soon as is practically feasible; no matter how insignificant the incident may appear. The Responsible Manager is required to contact & liaise with the nominated Downer Zero Harm Manager.

6. Reporting within **INX**

The Responsible Manager must be notified of every single environmental incident as soon as practically feasible. He/she shall co-ordinate the cleanup and rehabilitation. The Responsible Manager shall detail and record the events within **INX**, which encompasses the following:

- Location of incident;
- Nature of incident;
- Time of incident;
- Duration of release;
- Environmental damage caused, threatened or suspected.

- Immediate control action;
 - Sequence of Events and Root Cause;
 - Follow up controls to prevent further harm to the environment.
7. Instigate Clean up and Rehabilitation

The Responsible Manager has the responsibility of co-ordinating the cleanup and rehabilitation of the affected site to an acceptable standard.