



ENVIRONMENT PROTECTION LICENCE NO: 21029

July 2019 Monthly Report

FOR

**Princes Highway Upgrade
between Berry and Bomaderry**

Document control

File name	DSWJV-EPL21029-July-2019
Report name	Environment Protection Licence 21029 July 2019 Monthly Report – Princes Highway Upgrade between Berry and Bomaderry
Revision number	1

Approved by:




Brad Binns

Jacqueline McKenzie

Downer Seymour Whyte
Project Director

Downer Seymour Whyte
Environmental Site
Representative

Revision history

Revision	Date	Description	Approval
0	9/08/2019	Draft	
1	12/08/2019	Final	J.McKenzie/B.Binns

Distribution of controlled copies

Copy no.	Issued to	Version
1		
2		
3		
4		
5		

Contents

1	INTRODUCTION	4
2	NON-COMPLIANCES	4
3	RAINFALL AND WEATHER	5
4	SEDIMENT BASIN DISCHARGE	6
5	AIR MONITORING RESULTS	8
6	NOISE MONITORING RESULTS	9
7	ENVIRONMENTAL COMPLAINTS	12
	Table 3-1 July 2019 Rainfall monitoring results	5
	Table 4-1 July 2019 Sediment basin discharge(s)	7
	Table 5-1 July 2019 Air quality monitoring results	9
	Table 6-1 July 2019 Noise Monitoring Results.....	10

1 INTRODUCTION

The Downer Seymour Whyte Joint Venture (DSWJV) is contracted by Roads and Maritime Services (Roads and Maritime) to upgrade 10.3 kilometres of the Princes Highway between Mullers Lane (south of Berry) and Cambewarra Road, Bomaderry in New South Wales (NSW) (the Project). The project will provide a four-lane divided highway (two lanes in each direction) with median separation.

The project is one of a series of upgrades to sections of the Princes Highway which aims to provide a four-lane divided highway between Waterfall and Jervis Bay Road, Falls Creek. This would improve road safety and traffic efficiency, including for freight, on the NSW South Coast.

Figure 1 provides an overview of the project location.

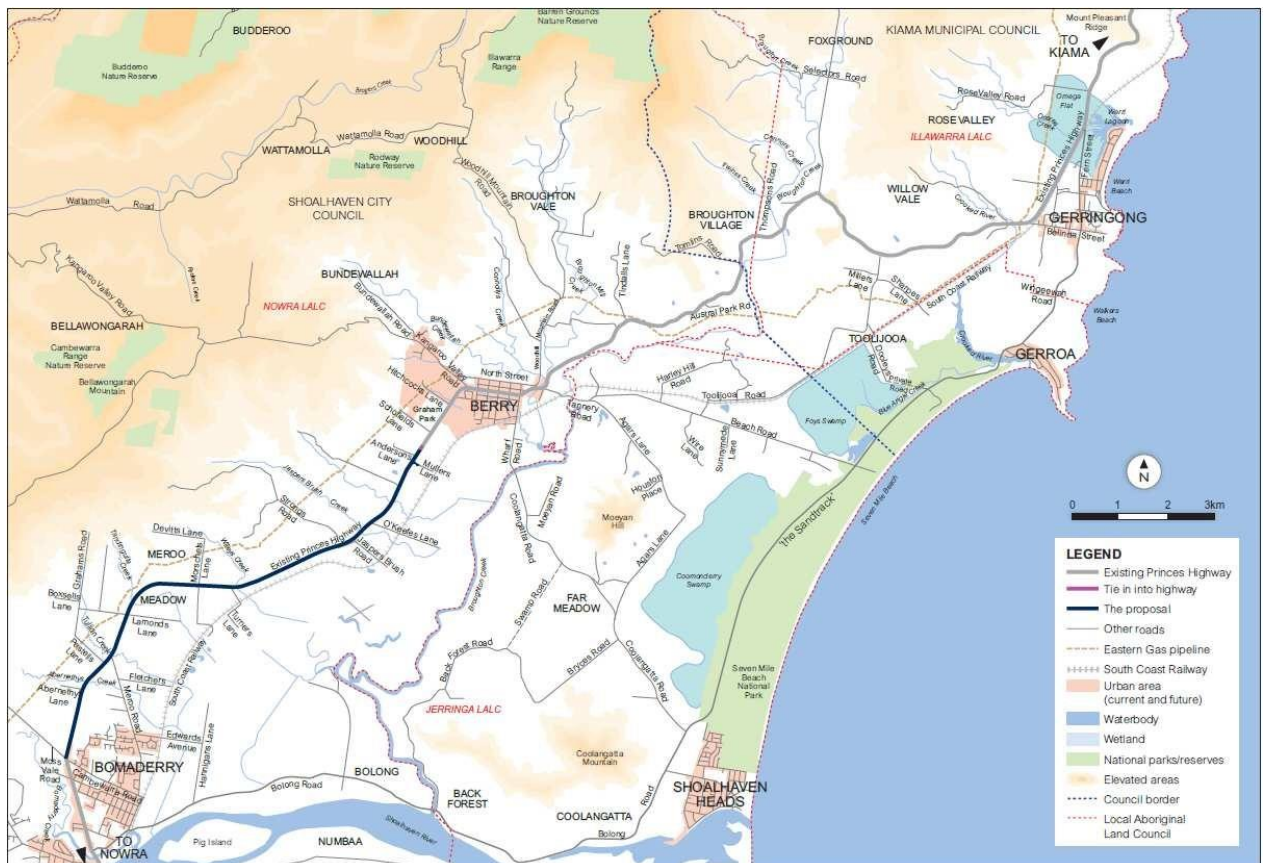


Figure 1-1 Project location

This report provides the results of monitoring undertaken during July 2019 as required by the project’s Environment Protection Licence (EPL 21029) Condition R4.1.

2 NON-COMPLIANCES

No non-compliances with EPL conditions occurred for the reporting period of July 2019.

3 RAINFALL AND WEATHER

The RMS automatic weather station is situated at Ison Lane, Jaspers Brush, located adjacent to the project’s main ancillary compound (Ison Lane Compound) for the project. The results of rainfall monitoring for July 2019 are provided in Table 3-1 and Figure 3-1 below.

Table 3-1 July 2019 Rainfall monitoring results

Location	Monthly rainfall recorded (mm)
Ison Lane, Jaspers Brush (RMS automatic weather station)	31.4

July was drier than average with only 31.4mm of rainfall recorded at the project specific weather station at Ison Lane, Jaspers Brush (RMS automatic weather station). The long term average expected rainfall is around 48.5mm for July as taken from the Nowra Boat Shed Bureau of Meteorology Weather Station. There was only one rain event in early July, totalling 28.6mm with the largest daily total falling on the 5th with 13.2mm being recorded.

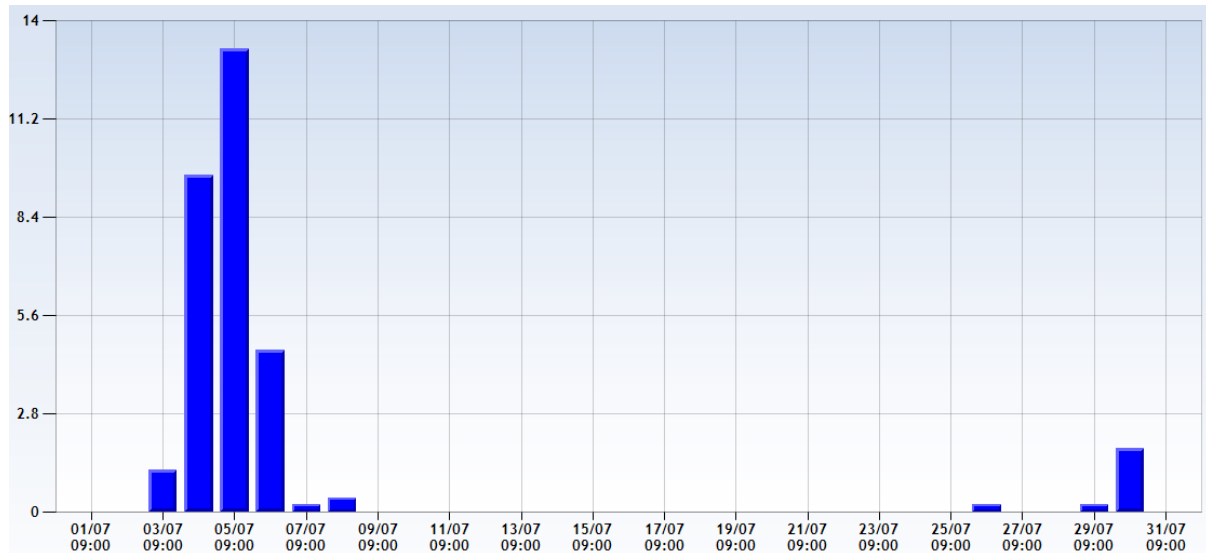


Figure 3-1 July Rainfall Results from Ison Compound Weather Station

July was characteristically windy. The predominant wind for July was from the west-southwest. The highest wind gust recorded was 102.9 km/h and maximum wind speed was 56.7 km/h (refer Figure 3-2). DSWJV continue to monitor site activities, implement dust suppressant across site, utilise a fleet of water carts during working hours and limit dust generating activities and even suspend work activities on days of high wind.

AVERAGE Wind Direction and AVERAGE Wind Speed in km/h
 Period: 1/7/2019 to 31/7/2019
 Direction the Wind is Blowing To

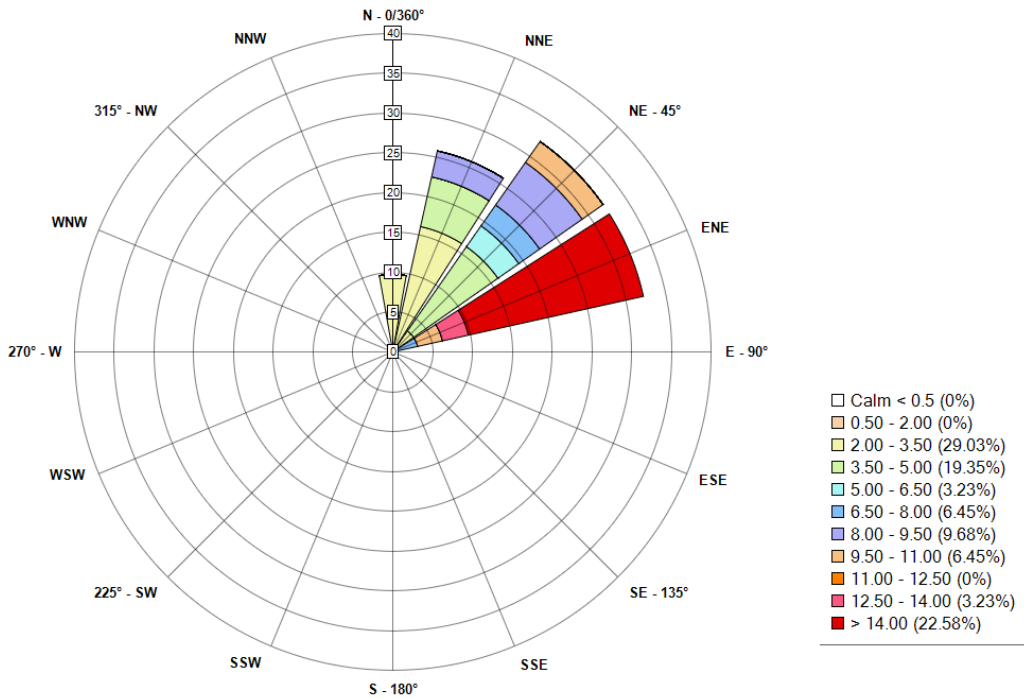


Figure 3-2 July 2019 Wind Rose Results from Isons Compound Weather Station. Average Wind direction and Average Wind Speed shown. N.B. Wind Rose shows direction wind is blowing to.

4 SEDIMENT BASIN DISCHARGE

Eighteen sediment basins were licensed under the EPL during June 2019. No sediment basins were commissioned during the month.

On the 20th of June in accordance with licence condition L2.6, DSWJV began to use a statistical correlation for the calculation of TSS (mg/L) from Turbidity (NTU). The correlation uses the formula of $TSS (mg/L) = 0.43 * (NTU) + 1.00$. Given that the threshold value for TSS is 50mg/l, samples if less than 114 NTU would be deemed suitable for discharge. For a factor of safety, the acceptable discharge limit was reduced to 90 NTU. See Table 4.1 below for details on sediment basin discharges.

Table 4-1 July 2019 Sediment basin discharge(s)

EPA Identification No.	Location (adjacent address)	Discharge Date	pH (6.5-8.5)	Nephelometric Turbidity Units (<100NTU)	Oil and Grease (none visible)
PB19.82.S	Mullers Lane	8/07//19	7.95	42.2	None visible
PB24.45.N	B660 Princes Highway	1/7/19	6.67	9	None visible
		10/7/19	7.5	16.5	None visible
TB21.15.N	Opposite O'Keefes Lane	4/7/19	7.2	92*	None visible
		8/7/19	6.65	88.1	None visible
TB21.50.N	Opposite Jaspers Brush Road	4/7/19	7.04	24.7	None visible
		11/7/19	6.8	30	None visible
		24/7/19	6.98	28.6	None visible
TB21.70.S	Intersection at Jaspers Brush Road	8/7/19	7.74	33.4	None visible
		10/7/19	7.74	33.4	None visible
TB22.10.N	Strongs Road	08/7/19	8.28	16.9	None visible
TB22.65.S	B455 Princes Highway	8/7/19	7.99	20.3	None visible
TB22.80.N	Ison Compound	08/7/19	8.45	47.6	None visible
		09/07/19	7.22	42	None visible
TB23.40.S	Jaspers Brush North of Wileys Creek	08/7/19	7.63	12.6	None visible
TB23.45.S	Jaspers Brush North of Wileys Creek	09/07/19	7.4	22	None visible
TB23.80.S	Wileys side track compound	08/7/19	7.31	14.7	None visible
TB25.10.N	Devitts Lane	04/07/19	6.99	31	None visible
		10/07/19	6.8	69	None visible
		19/07/19	7.88	53	None visible
TB25.75.N	South of Devitts Lane	8/07/19	7.69	26.5	None visible
TB28.90.N	Abernethy's Lane	9/07/19	6.95	18	None visible
		24/7/19	6.61	5.5	None visible

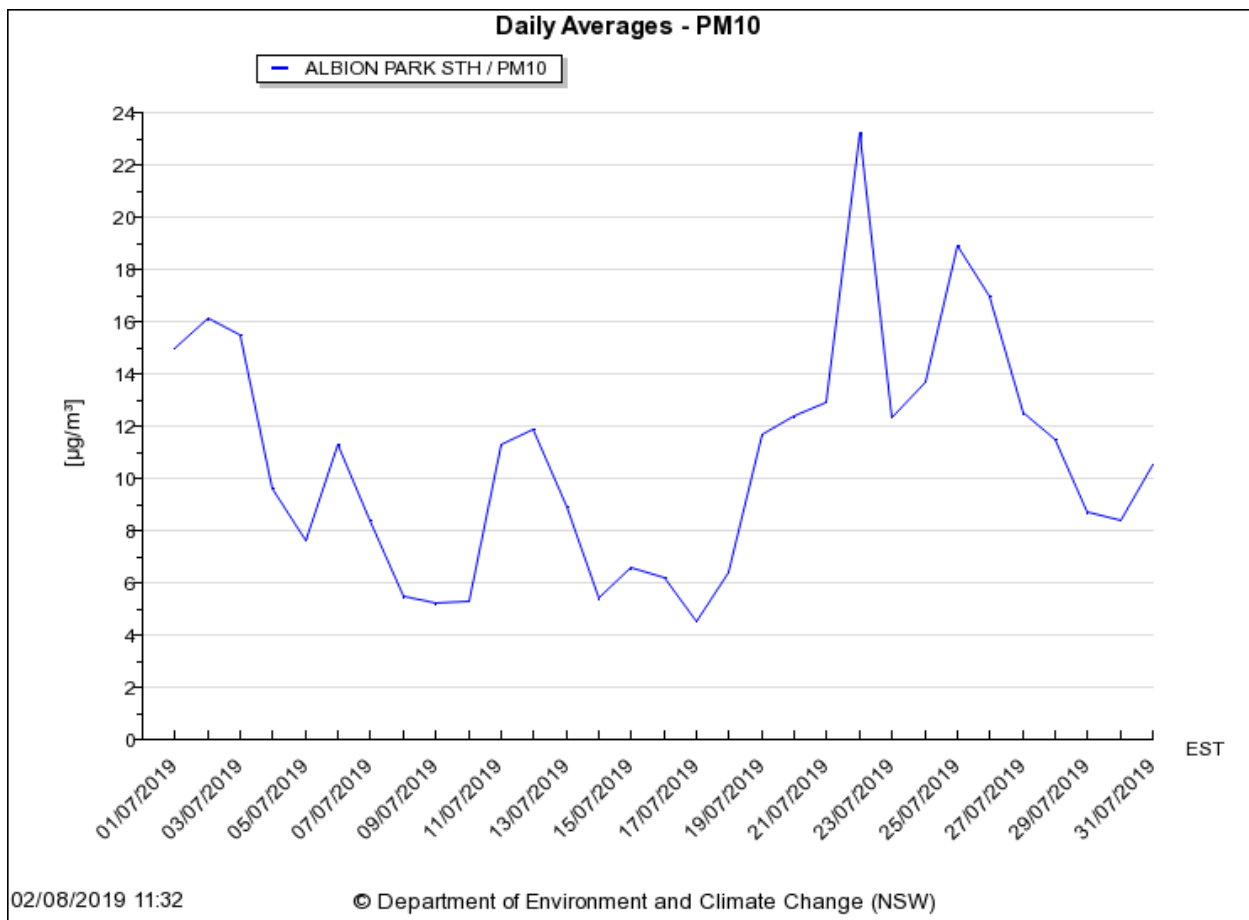
TSS (mg/L) modelled from Turbidity (NTU) based on approved correlation formula of $TSS = 0.43*(NTU) + 1.00$

***Lab sample also taken and determined to be 41mg/L TSS (ie <50mg/L)**

5 AIR MONITORING RESULTS

Dust deposition gauges for the project were installed on 26th of June 2019 and changed on 26th July 2019 within the NATA accredited window (30 days +/- 2 days). Air quality has been assessed according to the *Approved Methods for the Modelling and Assessment of Air Pollutants in New South Wales* (EPA, 2016). Results are summarised in Table 5-1 below.

Error! Reference source not found. provides air quality data at the nearest OEH ambient air quality monitoring station to the project (Albion Park, approximately 25 km north of the project area).



Two dust gauges recorded insoluble matter in exceedance of the allowable 4g/m²/month. DDG H recorded 4.3g/m² and DDG JK recorded 12.1g/m² in the month of July. See Table 5.1 below for detailed results.

DDG H is positioned close to the haul road at this location and levels are likely attributed to heavy vehicle movements through the area. Watercarts were used extensively during dry and windy conditions to manage dust at this location.

DDG JK had a high level of combustible matter in the sample. This dust gauge is located midway down the slope of an overgrown, grassy paddock to the northwest of Tullian Creek and therefore is likely that windblown grass seed/material has contributed to the high combustible material levels recorded.

The 12 month rolling average for DDG JK has increased to more than the target level of

4.0g/m²/month during July at 4.4g/m²/month. Dust mitigation efforts will be focused in this area in the coming months to minimise project-based dust levels at this location. Non-project factors as noted above may continue to result in high dust levels at this location however.

Table 5-1 July 2019 Air quality monitoring results

EPA Identification No.	Location (adjacent address)	Ash Content g/m ² ,month	Combustible Matter g/m ² ,month	Total Insoluble Matter g/m ² ,month	Rolling Average (Total Insoluble Matter) g/m ² ,month
1-DDG A	10 Croziers Lane, Jaspers Brush	0.2	0.3	0.5	2.5
2-DDG B	10A Jaspers Brush Road, Jaspers Brush	1	0.2	1.2	2.2
3-DDG C	20C Strongs Road, Jaspers Brush	1.4	0.3	1.7	2.7
4-DDG D	10C Jaspers Brush Road, Jaspers Brush	0.4	0.2	0.6	2.5
5-DDG E	30 Ison Lane, Jaspers Brush	0.2	0.2	0.4	1.1
6-DDG F	Lot 209 DP 1210788	0.7	0.2	0.9	2.7
7-DDG H	10 Lamonds Lane, Meroo Meadow	3.9	0.4	4.3	3.9
8-DDG I	19 Boxsells Lane, Meroo Meadow	0.4	0.1	0.5	1.4
9-DDG J/K	265 Princes Highway, Meroo Meadow	2.6	9.5	12.1	4.4
10-DDG L	1028 Meroo Meadow, Meroo Meadow	1.5	0.7	2.2	2.9
11-DDG M	32 Elvin Drive, Bomaderry	0.7	0.1	0.8	1.9
12-DDG N	9 Devitt's Lane, Meroo Meadow	0.5	0.1	0.6	1.7
13-DDG P	24 Abernethys Lane, Meroo Meadow	0.4	0.1	0.5	2.8

Note: bold type indicates a result above the relevant criteria

6 NOISE MONITORING RESULTS

Noise monitoring was undertaken in accordance with the Construction Noise and Vibration Management Plan (CNVMP) for the project in July 2019. No exceedances above predicted levels for the relevant activity were recorded.

Table 6.1 below summarises the attended noise monitoring undertaken in July 2019.

Table 6-1 July 2019 Noise Monitoring Results

EPA ID No.	Location description	Construction activity	Date	Time	L(A)eq 15min	Comments
15	L1 - B210 Princes Highway, Jaspers	Construction works not audible	25/07/19	8:46 9:01	67.6	<ul style="list-style-type: none"> No construction noise audible – Princes Highway dominant noise source
16	L2 - 20C Strongs Road, Jaspers Brush	Earthworks Bridgeworks	25/07/19	8:11 8:26	62	<ul style="list-style-type: none"> Some intermittent noise from reversing squawkers on excavators working on batter below. Traffic from Princes Highway dominating with light heavy vehicle.
17	L3 - 30 Ison Lane, Jaspers Brush	Construction works not audible	25/07/19	9:08 :923	55.9	<ul style="list-style-type: none"> No construction noise audible LV's entering and exiting Ison's compound Constant traffic on the Princes highway
18	L5 - 15 Turner Lane, Jaspers Brush	Earthworks	25/07/19	9:23 9:38	58	<ul style="list-style-type: none"> Traffic from Princes Highway with light vehicles dominating
19	L6 - B710 Princes Highway, Jaspers Brush	Bridgeworks Earthworks	25/07/19	7:10 7:25	63.4	<ul style="list-style-type: none"> Crane Workers with hand tools Constant traffic on the Princes Highway
20	L7 - 310C Princes Highway, Jaspers Brush	Construction works not audible	25/07/19	12:47 13:02	63	<ul style="list-style-type: none"> Grader working 15-150m away Truck and dogs entering site x 4 Workers talking on radio Reversing squawker on grader Princes Highway Traffic
21	BG08 - 19 Boxsells Lane, Merroo Meadow	Construction works not audible	25/07/19	8:41 8:56	47.08	<ul style="list-style-type: none"> No construction noise audible
22	BG09 - 1028 Merroo Road, Merroo Meadow	Earthworks	25/07/19	9:31 9:46	54.6	<ul style="list-style-type: none"> Excavator and grader working 100m away Princes Highway Traffic Merroo Road Traffic x 25 Kids talking and playing in 1028 Merroo Road Birds calling

EPA ID No.	Location description	Construction activity	Date	Time	L(A)eq 15min	Comments
23	L8 - 24 Abernethys Lane, Meroo Meadow	Earthworks Drainage	25/07/19	8:17 8:32	56	<ul style="list-style-type: none"> • Delivery of GF to Abernethy's x 6 • Truck and Dogs idling, exhaust brakes, squeaking, tailgates slamming, reverse squawkers • Workers talking, workers radios • Traffic on Abernethy's Lane x 2 • Princes Highway Traffic • Helicopter flying overhead • Worker using toilet
24	BG10 - 35 Gardenia Crescent, Bomaderry	Construction works not audible	25/07/19	13:15 13:30	48.7	<ul style="list-style-type: none"> • No construction noise audible
25	BG11 - 38 Elvin Drive, Bomaderry	Earthworks	25/07/19	7:44 7:55	67.7	<ul style="list-style-type: none"> • Excavator idling 40m away • Workers talking/arguing • Excavator squeaking as it tracks along fill • Excavator tracking within 2m of logger • Excavator beginning work 20m away from logger

7 ENVIRONMENTAL COMPLAINTS

There were two environmental complaints received in July which were closed out within the required timeframes. Both complaints were in relation to the same issue – dust at Lamonds Lane. See Table 7.1 below for details.

Table 7. 1 - Summary of environmental complaints received for July 2019.

Complaint Details	Required timeframe for response (G36)	Date/ time complaint received	Actions & due date	Status / timing
Dust – Same resident as previous complaint.	24 hours – response (SMS) 5 days response	17/7/19 – 2.00pm	Resident complained water carts had attended but had not sprayed water. Escalated to EPA. CM / EM asked for work to stop for remainder of day. Resolution was discussed with resident.	Closed – within two hours.
Dust	24 hours – response (SMS) 5 days response	17/7/19 – 1.30 pm	Resident complained that dust from Lamonds turning bay was excessive. CM arranged water carts to attend immediately and stay in the area.	Closed – within two hours.