

# Transforming communities with safe and reliable **LIGHT RAIL SOLUTIONS**

**Keolis Downer combines world-leading capabilities to deliver complex light rail projects in demanding urban environments in Australia and New Zealand.**

## World-leading capabilities

**Keolis and Downer have an established partnership to combine their world-leading capabilities for safely delivering light rail projects which enhance urban mobility.**

Our partnership draws on Keolis' experience as the world's leading light rail operator and Downer's capability as a leading transport, infrastructure and asset management service provider.

Leading the way in public transport, Keolis partners with public decision makers to make shared mobility an asset for cities and local communities. With operations in 16 countries across four continents, Keolis operates and maintains more kilometres of light rail network and carries more passengers than any other light rail operator in the world.

Downer has a long history of safely delivering major rail projects for the success of our customers and the communities in which we operate. Leveraging over 150 years of rail experience, Downer safely operates over 20 manufacturing and maintenance sites across Australasia.

## Operations and maintenance

KEOLIS DOWNER STATISTICS IN AUSTRALASIA:



**250M**  
Passenger  
journeys



**265km**  
Track



**11**  
Depots



**500+**  
Vehicles

**Keolis Downer's transport solutions transform cities by increasing social inclusion, reducing traffic congestion and enhancing the livability of high and medium density areas.**

We design light rail networks that optimally align with other interfacing transport modes and which maximise transport capacity for passenger demand.

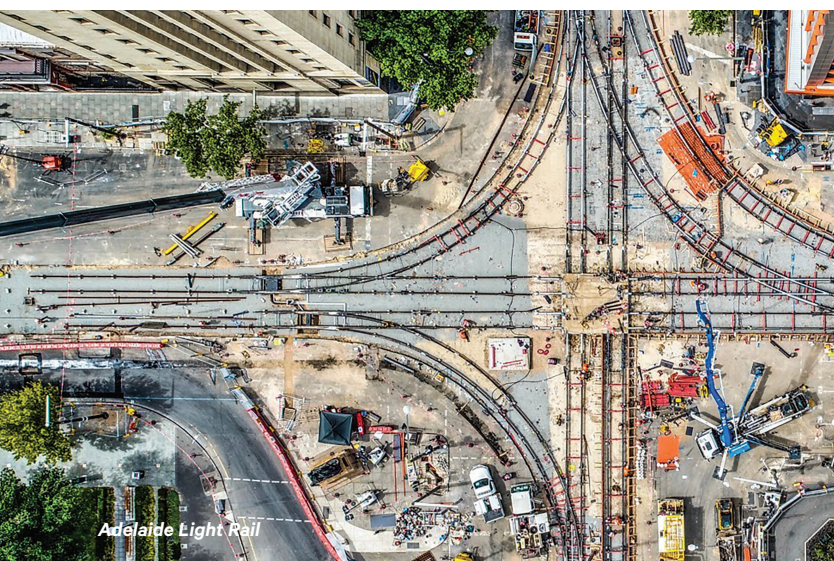


On the Gold Coast, approximately 30,000 daily trips are made on Glink which operates to 99.9% punctuality.



Newcastle Light Rail system is characterised by Australia's first application of catenary-free operation with supercapacitors.





Adelaide Light Rail

Within Australasia, Keolis Downer leads the light rail segment with the operation and maintenance of:

- Yarra Trams in Melbourne, Victoria
- G:link on the Gold Coast, Queensland
- Newcastle Light Rail in New South Wales.

Our Joint Venture has received several awards for its operational excellence and is famous for its guiding management values to “Think like a passenger”.

Keolis Downer’s maintenance activities are guided by Downer’s leading asset management expertise. With Australia’s first accredited ISO 55001 certification for Asset Management, we are one of the first 10 globally to receive this accreditation. Our customers trust us to maintain their fleets with several long-term maintenance contracts.

## Light rail infrastructure and systems

Downer understands the challenges and opportunities inherent in delivering major public infrastructure in an urban corridor whilst minimising any impact on communities and stakeholders.

Downer has been the trusted partner delivering critical infrastructure for projects including:

- Newcastle Light Rail
- Adelaide Light Rail
- Trams Refurbishment
- Gold Coast Light Rail
- Parramatta Light Rail.

We draw on customer insights attained from Keolis’ global operations to optimise the design of light rail systems. These inputs enrich the design of vehicles and stations to create comfortable and accessible environments for all passengers.

Additionally, we leverage the insights of our in-house operators and maintainers to design and deliver depots and light rail infrastructure, with efficient operations and maintenance practices in mind.

### Our offering

Rail tracks

Vehicles

Signalling

Power

Road network management

Operations

Accreditation Management



Stations

Depots

Utilities

Ticketing

Traffic signals, lighting, ITS

Maintenance

Asset Management



## Light rail case studies

In 2019, we commenced the operations and maintenance of **Newcastle’s Light Rail** network which is a key piece in Newcastle’s integrated transport service. Keolis Downer is responsible for the design, construction and operation of this Australian-first inter-modal system.

The system consists of:



In Queensland, we operate and maintain the **Gold Coast Light Rail** system, driving prosperity and growth to one of Australia’s largest cities and most popular tourist destinations. Gold Coast Light Rail is one of the largest infrastructure projects in south-east Queensland and in 2017, became Australia’s first light rail system to be certified to ISO 55001 for Asset Management.

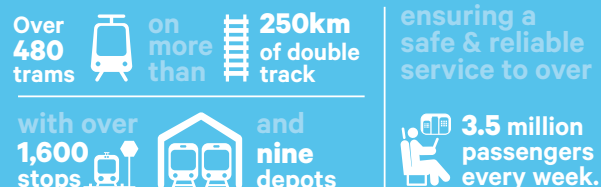
Gold Coast Light Rail was Australia’s first light rail system to be certified to ISO 55001 for Asset Management.



**Keolis Downer operates and maintains the largest tram network in the world, Melbourne’s Yarra Trams.**

In 2017, we were awarded the Tram Refurbishment Project which will see about 85% of Melbourne’s trams restored to their original condition, making it the largest light rail overhaul project undertaken globally. The Project is testament to our position as Australasia’s leading provider of passenger transportation asset management services.

Melbourne’s iconic light rail system has:



Built in Melbourne over 30 years ago, the above tram is the first of 450 trams to be restored to their original condition.