

Mount Thorley Pollution Incident Response Management Plan

Attachment H

Contents

1. Purpose	2
2. Description and Likelihood of Hazards.....	2
3. Pre-Emptive Actions to be Taken	2
4. Inventory of Pollutants.....	2
5. Pollution Prevention Equipment	2
6. Contact Details	3
7. Communicating with Neighbours and the Local Community	3
8. Maps.....	3
9. Actions to be Taken During or Immediately After a Pollution Incident.....	3
10. Staff Training	4
11. Making Plans Available	4
12. Testing Plans.....	5
Appendix A - Map of the facility with the storage locations identified	6
Appendix B –Twenty four hour emergency contact details.....	7
Appendix C – Notification Procedure for Pollution Incidents	8

1. Purpose

This document has been developed to be consistent with the New South Wales Environmental Protection Authority's Guideline for "Preparation of Pollution Incident Response Management Plans" and makes up a component of the over-arching Mt Thorley Emergency Management Plan (8150200-SE-PLA1001).

2. Description and Likelihood of Hazards

The Mount Thorley Environmental Aspects Register (815200-SE-REG8) provides a description of the main hazards to the environment associated with all activities undertaken at the facility. The aspects and impacts listed for each activity represent the hazards.

The likelihood of the hazards occurring has been assessed in the Environmental Aspects Register by applying the Downer Mining Qualitative Risk Analysis Matrix (DM-RM-F21). The Likelihood rating assessed in the Environmental Aspects Register is based on normal operating conditions with all existing controls in place and has taken into consideration surrounding land uses and conditions. Exceptional circumstances that may increase the likelihood of hazards occurring may include:

- significant rain events
- significant drought events
- fires
- unforeseen equipment failures
- operator breach of procedures/ human error
- vandalism

3. Pre-Emptive Actions to be Taken

The Mount Thorley Environmental Aspects Register (815200-SE-REG8) provides a description of all existing controls currently in place for each hazard. The existing controls represent the pre-emptive actions undertaken to minimise or prevent any environmental risk or harm as a result of the activities at the facility. Additional controls are also described in the Environmental Aspects Register. These represent controls that will be in place in the future to further reduce the risks.

4. Inventory of Pollutants

The Mount Thorley Emergency Management Plan provides an inventory of the potential pollutants kept at the facility including location, storage method, UN number, dangerous goods classification and maximum storage quantity. Appendix A of this document provides a map of the facility with the storage locations identified.

5. Pollution Prevention Equipment

Spill kits are available in manufacturing building, these shall include at a minimum:

- gloves
- shovel
- waste bags
- general purpose pads

- general purpose booms
- universal absorbent
- dust pan and brush

In the unlikely event of a large chemical spill, earthmoving equipment may require mobilising to establish protective earthen bunding.

6. Contact Details

The names, position titles and 24-hour contact details of the Downer Blasting Services emergency contacts responsible for activating the plans and managing responses including notifying relevant authorities are listed in Appendix B of this document.

Appendix C of this document is the Notification Procedure for Pollution Incidents. This provides contact details of the relevant authorities requiring notification specifically in the event of potential pollution incidents, as well as the step-by-step notification requirements, including locality plans described below.

7. Communicating with Neighbours and the Local Community

Appendix C of this Plan specifies that neighbours and the local community will be notified of any potential pollution incident via telephone or door-to-door methods. Other communication methods may also be used including letterbox drops, local media, and website notifications. It also provides contact details of neighbours within 500m of the facility.

Appendix C provides a map of the potential downstream path of contaminants should an environmental incident occur where contaminated water is released from the facility. All properties along this downstream path including the stormwater drainage line, Loders Creek and for 2km downstream in the Hunter River are also listed in Appendix C.

8. Maps

Appendix A shows the facility layout including potential pollutant storage areas.

Appendix C provides the facility locality.

Appendix C provides potential downstream path of water contaminants including all properties along the stormwater drainage line, Loders Creek and for 2km downstream in the Hunter River.

9. Actions to be Taken During or Immediately After a Pollution Incident

The Mt Thorley Emergency Management Plan contains the General Emergency Procedure for the site, detailing the actions to be taken during and following all incidents, and requirements to ensure personnel and persons in the vicinity or the emergency remain safe.

Incidents or events that may result in off-site pollution via water discharge shall be managed as follows:

Site Manager

UPON IDENTIFYING ACTUAL OR POTENTIAL WATER RELEASE OFFSITE, NOTIFY OPERATIONS MANAGER AND ENVIRONMENTAL REPRESENTATIVE AS SOON AS PRACTICABLE.

- Monitor and observe weather conditions and rain levels in local area.
- Undertake inspection and assessment of all areas of the site, identifying and initiating actions to minimise the impact of any rain (eg sand-bagging vulnerable areas, ensure pumps are operating).
- If additional rain is forecast, contact Toxfree (02 4088 0000) and put the trucks on standby.
- If a water release event will potentially occur, engage Toxfree (02 4088 0000) to truck water offsite.
- If a water release occurs or looks like it may have already occurred whilst site was unoccupied, take a water sample at the point of discharge and notify Environmental Representative.

Environmental Representative:

- Monitor and observe weather conditions and rain levels in local area.
- Liaise with AECOM (02 4911 4900 or 02 6575 9000 or 0419 639 877) to take required water samples.
- Liaise with Site Manager about forecasts and dam water levels.
- Notify relevant environmental authorities if an uncontrolled water release occurs, in accordance with Appendix E.
- Notify relevant downstream neighbours of release (only when a known discharge occurs during a non-flood event).

Notification Procedure for Pollution Incidents is provided in Appendix C.

Costs of any clean up as a result of pollution incidents will be covered by Downer Blasting Services. Any cost recovery or insurance claims will be pursued following the incident.

10. Staff Training

Training for all personnel is conducted in accordance with the site Training Needs Analysis (Training Matrix). The scope of training is determined by the Training Matrix and is dependent upon the employment classification level. However, at a minimum all persons entering the facility must undertake induction training. Emergency procedure information contained in the inductions includes: key hazards, muster point locations, emergency and evacuation alarms, evacuation procedures, and incident response equipment locations. Training records are maintained on site.

11. Making Plans Available

This plan is located in hard copy at the Mt Thorley facility in Folder 11 - Environment. In addition, this plan is located on the internal DBS Project Management Plan and SharePoint.

The information required to be made available to the public in accordance with clause 98D of the POEO Regulation (G) is available for viewing on Downer Group public website.

<https://www.downergroup.com/pollution-incident-management-plans>

12. Testing Plans

This PIRMP will be tested annually by conducting desktop simulations and/or practical drills. This may be in conjunction with or in addition to the annual site emergency exercise. The test will be recorded in InControl (INX) and any corrective actions assigned to relevant personnel.

12.1. Historical Testing Records

Historical Test Dates	Method of Testing	Persons Involved
06/08/2014	Practical Drill	D. Christensen, G. Agnew, K. Hartley, A. Grant, M. Lloyd
28/07/2015	Practical Drill	A. Wigg, G. Agnew, B. Taylor, D. Markey, J. McIntyre
06/05/2016	Desktop Simulation	A. Russell
09/10/2019	Desktop Simulation	C. Melmeth

of the facility with the storage locations identified

LOCALITY PLAN
NOT TO SCALE

LEGEND

KEY

1. SULPHURIC ACID (UN2967)
2. SODIUM NITRITE (UN1500)
3. AMMONIUM NITRATE (UN1942)
4. HEAT EMULSION (UN3375)

W1. PUMPS TO W2
OVERFLOWS TO STORMWATER SYSTEM

W2. PUMPS TO W2A
OVERFLOWS TO W2A / FLOODS AREA

W2A. PUMPS TO TANKS
OVERFLOWS TO W2 / FLOODS AREA

W5. OVERFLOWS TO STORMWATER
SYSTEM

W5A. OVERFLOWS TO STORMWATER
SYSTEM

TANKS. PUMP TO THE PLANT
OVERFLOW TO W2A

ELEVATION

72.5m

70.0m

67.5m

65.0m

62.5m

60.0m

57.5m

55.0m

52.5m

CLEAN WATER DIVERSION
TO STORMWATER

DIRTY WATER CONTAINMENT

SPRINKLERS AND
APPROX. AREA COVERAGE

THE LOCATION AND SIZE OF EQUIPMENT AND SERVICES SHOWN ON THIS DRAWING HAVE BEEN DETERMINED AS ACCURATELY AS POSSIBLE. THE SCALE ON THIS DRAWING IS APPROXIMATE AND SHOULD BE USED AS A REFERENCE ONLY. ALL DIMENSIONS SHALL BE VERIFIED ON SITE.

REV	DESCRIPTION	DRN	CKD	APP	DATE	REV	DESCRIPTION	DRN	CKD	APP	DATE
E	ISSUED FOR INFORMATION	LMc	BT	-	02/10/15						
D	ISSUED FOR INFORMATION	LMc	KH	KH	1/12/14						
C	ISSUED FOR INFORMATION	LMc	KH	KH	17/11/14						
B	ISSUED FOR INFORMATION	LMc	BT	BT	13/06/14						
A	ISSUED FOR REVIEW	LMc	BT	BT	13/06/14						

DRAWING NUMBER
DBS-A-MTH-C-011

DOWNER BLASTING SERVICES
MOUNT THORLEY
MANUFACTURING PLANT
SITE DRAINAGE PLAN

DBS

DRN LMc 13/06/14
CKD BT 13/06/14
APP BT 13/06/14
SCALE 1:1500
JOB

DRAWING NUMBER
DBS-A-MTH-C-011

REV E

Appendix B –Twenty-four-hour emergency contact details

Downer Blasting Services: Emergency Contacts

Downer Emergency Number 1800 680 402

Position	Role	Mobile Phone	Work Phone
Site Manager – Christopher Melmeth	Facility Emergency Controller Fire Warden	0429477674	02 65742409
Compliance Coordinator – Karen Fitz-Walter	Emergency Services Liaison Officer (Facility Emergency Controller)	0477 332 384	07 3026 6914
Operations Manager – Graham Hogg	Emergency Services Liaison Officer	0419 754 560	07 3026 6990
Environmental Representative – Haylie Dawes	Environmental Emergency Services Liaison Officer	0419 285 715	

Appendix C – Notification Procedure for Pollution Incidents

Notification Procedure for Pollution Incidents

If an emergency or incident is determined to have caused or threatened material harm to the environment, Downer Mining will immediately call 000, as per the site Emergency Management Plan. If the incident presents an immediate threat to human health or property Fire and Rescue NSW, the NSW Police and the NSW Ambulance Service are the first responders, as they are responsible for controlling and containing incidents.

If the incident does not require an initial combat agency, or once the 000 call has been made, Downer Mining will notify the relevant authorities in the following order:

- The NSW EPA – Environment Phone Line on 131 555
- The Department of Health (Newcastle) – phone (02) 4924 6477
- The SafeWork Authority – phone 13 10 50
- The local authority (Singleton Council) – phone (02) 6578 7290
- Fire and Rescue NSW (Singleton) – phone (02) 6572 1495 Note: If the situation warranted calling 000 as a first point of notification, you do not need to ring Fire and Rescue NSW again.

All public enquiries and reporting should be directed to the Downer Complaints Number

1300 884 803

Neighbouring properties that may be affected by a pollution incident will be alerted by Emergency Services and/or Downer Mining through telephone contact or door-to-door notification. Other mechanisms may be adopted appropriate to the circumstances to notify and update the surrounding community of an incident, including:

- Letter box drops;
- Local media sources; and
- Downer website updates and media releases.

Specific information that may be provided to neighbours may include:

- incident description;
- incident status;
- actions being undertaken;
- type of pollutant (air, water, land);
- potential impact area; and
- specific instructions or advice e.g. close windows and doors, remain inside, avoid contact with water in creek, stop animals accessing water in the creek, etc.

Neighbouring property owners who are alerted to an environmental incident can contact the Site Manager for updates regarding the actions taken by Downer Mining to reduce or control any pollution caused by the incident. Neighbour contact details are provided below in Table 1.

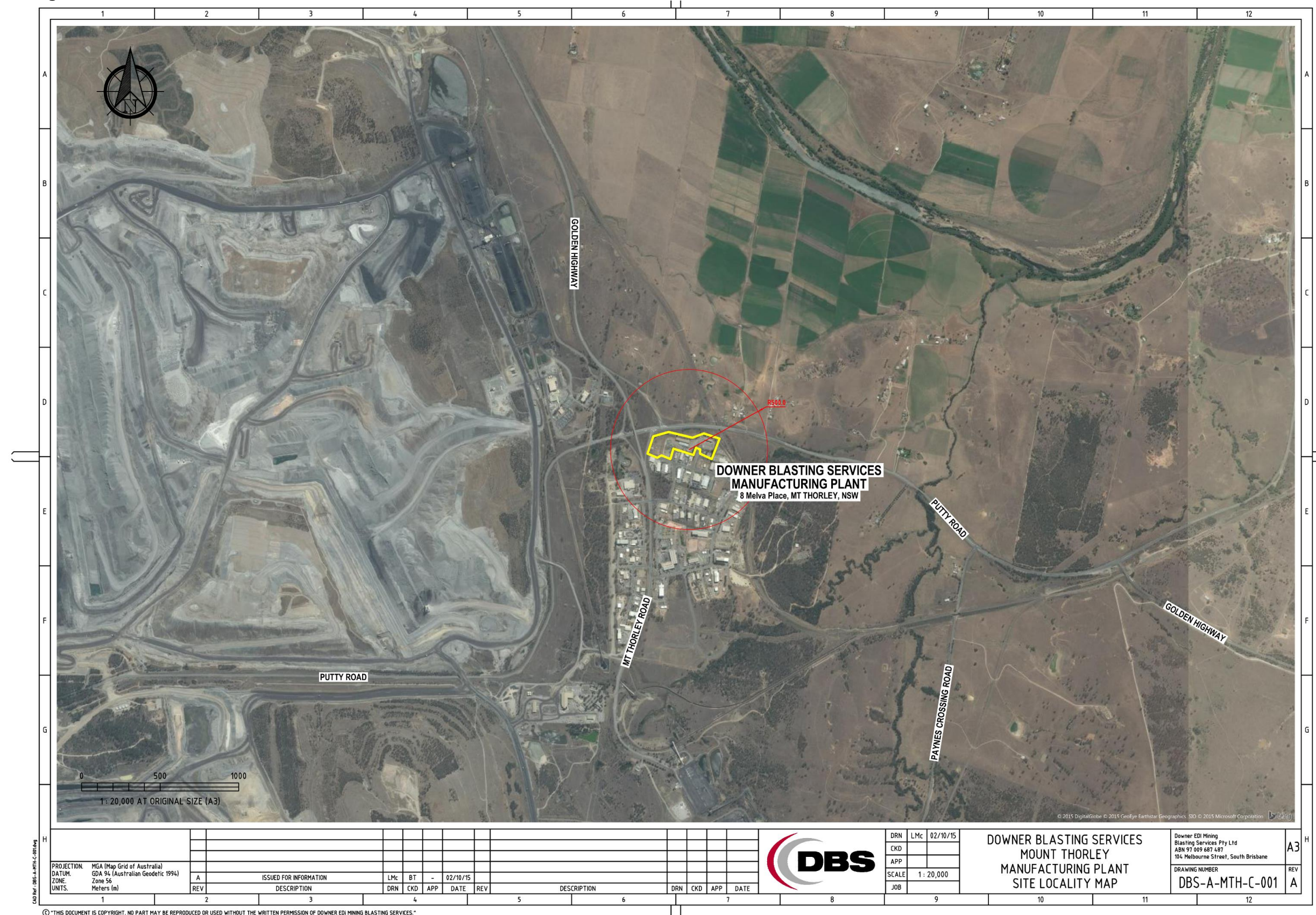
In the event of a contaminated water release emergency or significant incident, all downstream properties along the stormwater drainage line, Loders Creek and for 2km downstream in the Hunter River will be notified as soon as practicable. Plan 1 below provides scale and shows surrounding properties. Plan 2 below provides the Potential Downstream Path of Water Contaminants and Surrounding Lot Details.

Neighbouring Property Contact Details:

Property	Address	Contact Person	Phone
L113 DP262603	PO Box 21	Waytogo Properties Pty Ltd	0407 497 855
L112 DP262603	Morriset NSW 2264		
L11 DP1083504	Private Bag 1 Singleton DC NSW 2330	Wambo Coal Terminal Pty Ltd	(07) 3225 5500
L12 DP1083504	Private Bag 17	Dyno Nobel Asia Pacific Pty Ltd	(07) 3867 9495
L13 DP1083504	Singleton DC NSW 2330		
L7 DP861728	Hillview 984 Putty Road Mount Thorley NSW 2330	Mr P H Russell	(02) 6574 6509 0427 746 509
L12 DP595344	PO Box 267 Hunter Region MC NSW 2310	Warkworth Mining Ltd	(02) 6570 2400
L1 DP633933	Locked Bag 6015	Bulga Coal Management Pty Ltd	(02) 6570 2400
L2 DP633933	Hunter Region MC NSW		
L4447 DP1103007	2310		
L40 DP1147419	PO Box 4140 St Lucia South QLD 4067	Mr TP Hedley	(07) 3871 2330 0417 771 198
L5 DP1051532	PO Box 315 Singleton NSW 2330	Miller Pohang Coal Co Pty Ltd	(02) 6570 0914
L11 DP181396	609C Hambledon Hill Road,	J & R A Klasen	0427 911 908
L1 DP181396	Hambledon Hill NSW 2330		
L1 DP179120			
L8 DP861728	PO Box 267 Singleton NSW 2330	Mount Thorley Operations Pty Ltd	(02) 6570 1534
L2 DP181841	134 Idano Road Wylies Flat NSW 2330	Mr R O'Hara	Information Not Held
L19 DP755267	996 Putty Road Mount Thorley NSW 2330	Mr JC & Mrs RR Rumble	(02) 6574 6507 0428 638 373
L18 DP755267	Land & Property MRU PO Box 315 Singleton NSW 2330	Warkworth Mining Ltd	(02) 6570 0914
L108 DP262603	PO Box 310 Singleton NSW 2330	Ultimate Property Solutions Pty Ltd	Information not Held
L110 DP262603	PO Box 362 Singleton NSW 2330	Schofield Enterprises Pty Ltd	(08) 9353 3830
L111 DP262603	2 Cressy Road Ryde NSW 2112	Mr & Mrs Skvorc	(02) 9608 4318
L112 DP262603	PO Box 21 Morriset NSW 2264	Waytogo Properties Pty Ltd	0407 497 855

(Contact details provided by Singleton Council on 14th February 2020)

Plan 1 – Plan providing scale



This aerial map displays a rural landscape with numerous property lots, each labeled with a lot number and a DP (Deed Parcel) number. The lots are outlined in yellow. A prominent blue line traces a path through the landscape, starting from the top left and moving towards the bottom right. A black box in the lower-left quadrant highlights a specific area, which includes a small inset map showing the location within a larger region. The inset map shows a network of roads and a highlighted area in red. The main map includes labels for various roads: The Golden Hwy, Lydes Rd, The Golden Hwy, Woodland Rd, Piercefield Rd, Woodland Rd, Ketter Rd, and Oak Rd. The lots are labeled as follows:

- Lot 2 DP181841
- Lot 11 DP701717
- Lot 1 DP179120
- Lot 1 DP181396
- Lot 18 DP755267
- Lot 7 DP861728
- Lot 8 DP861728
- Lot 2 DP633933
- Lot 447 DP1103007
- Lot 44 DP1076716
- Lot 3 DP567274
- Lot 12 DP395344
- Lot 5 DP1051532
- Lot 11 DP1083504
- Lot 12 DP1083504
- Lot 13 DP1083504
- Lot 40 DP1147419
- Lot 41 DP1147419



****Your signature on this document verifies knowledge and understanding of the Emergency Management Plan****

[illegible]